



Quick Installation Guide
Wireless Adapter RNX-N1/N1MAC



The high-speed wireless USB 2.0 client adapter is the most convenient way to let you put a desktop/notebook computer almost anywhere without the hassle of running network cables. Now you don't need to suffer from drilling holes and exposed cables. Once you are connected, you can do anything, just like the wired network. This USB client adapter operates seamlessly in 2.4GHz frequency spectrum supporting the 802.11b, 802.11g, and 802.11n wireless standards. It's the best way to add wireless capability to your existing wired network or simply surf the web.

For advanced configuration, refer to the User's Manual in the CD-ROM provided.

USB Adapter Description

The USB adapter is a standard USB adapter that fits into any USB interface. The USB adapter has two LED indicators and a built-in antenna.

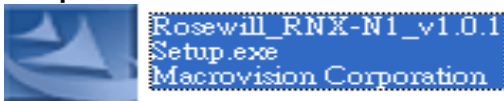


USB Adapter for Windows 2000/XP/Vista– Installation

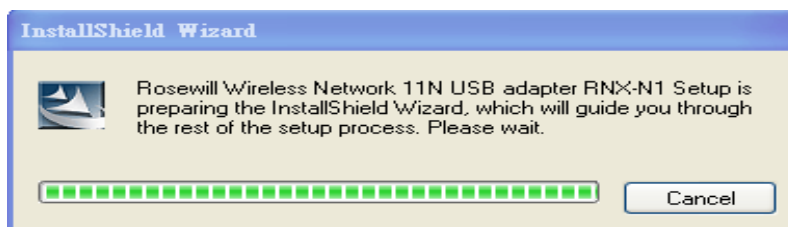
During the installation, Vista may need to copy systems files from its installation CD. Therefore, you may need a copy of the Windows installation CD at hand before installing the drivers.

Follow the steps below in order to install the USB adapter drivers:

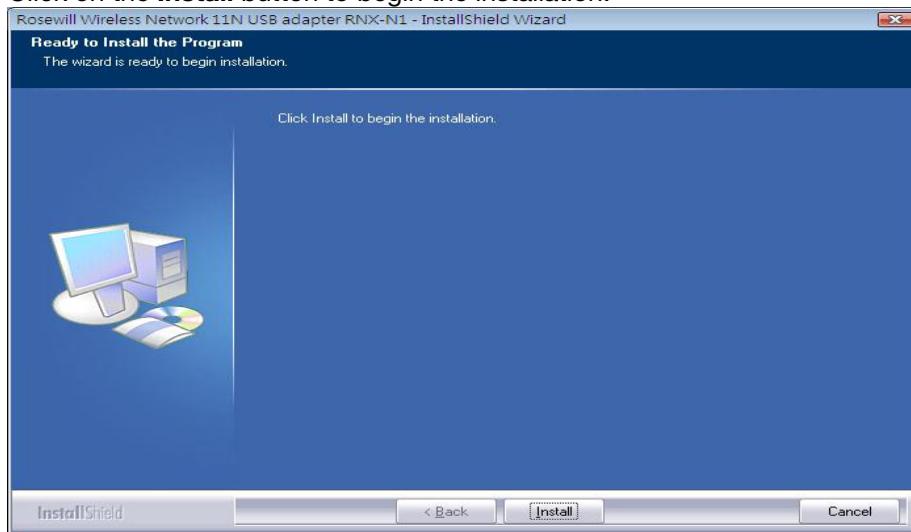
1. Insert the CD-ROM that was provided to you in this package. The setup should run automatically. If the setup does not run automatically, then you must manually select the **setup.exe** file from the CD-ROM drive.



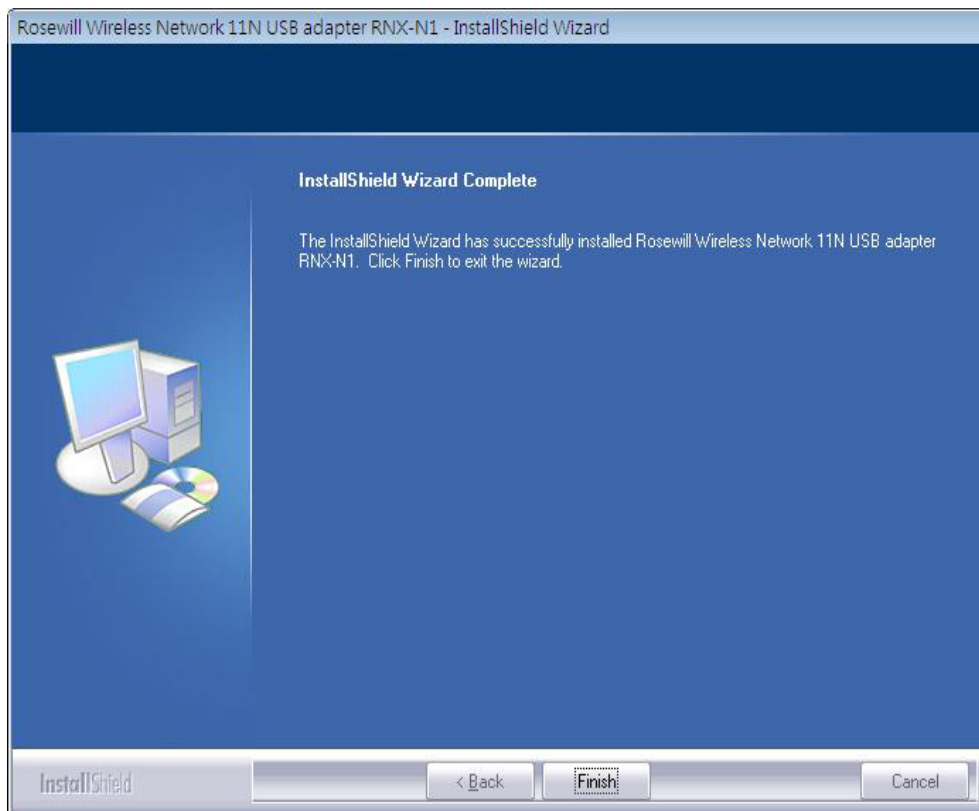
2. Once the setup begins you will see the **InstallShield Wizard**. Select **Rosewill Configuration Tool** and then click on the **Next>** button.



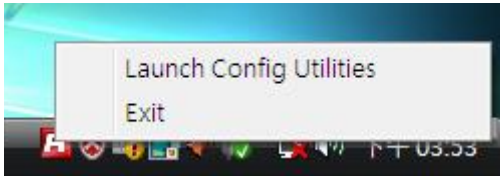
3. Click on the **Install** button to begin the installation.



4. The installation is complete. Click on the **Finish** button.



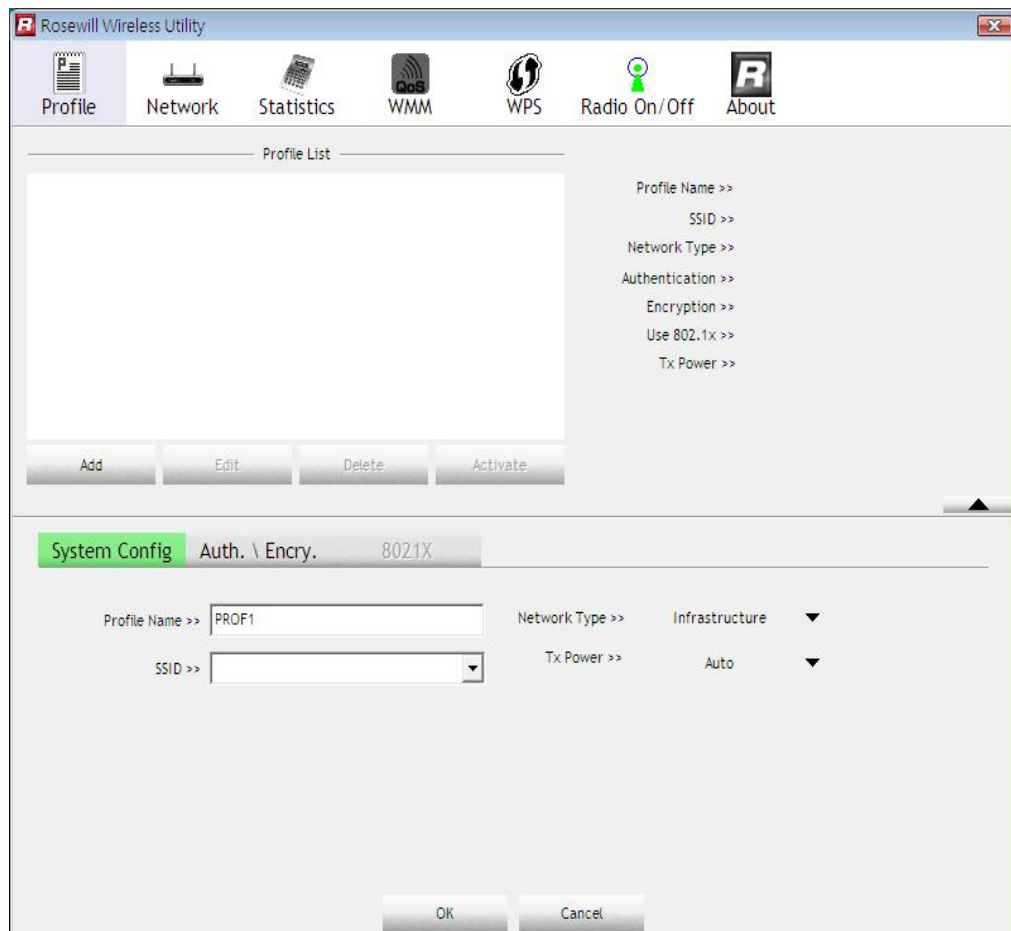
5. Carefully insert the **USB** adapter into the **USB** port. Windows will then detect and install the new hardware.
6. An **R** icon will then appear in the system tray. Right click on the **R** icon and then click on **Launch Config Utilities**.



Note: Click on **Use Zero Configuration as Configuration Utility** if you would like to use Windows Zero Config.

USB Adapter Adding a Profile – Windows 2000/XP/Vista

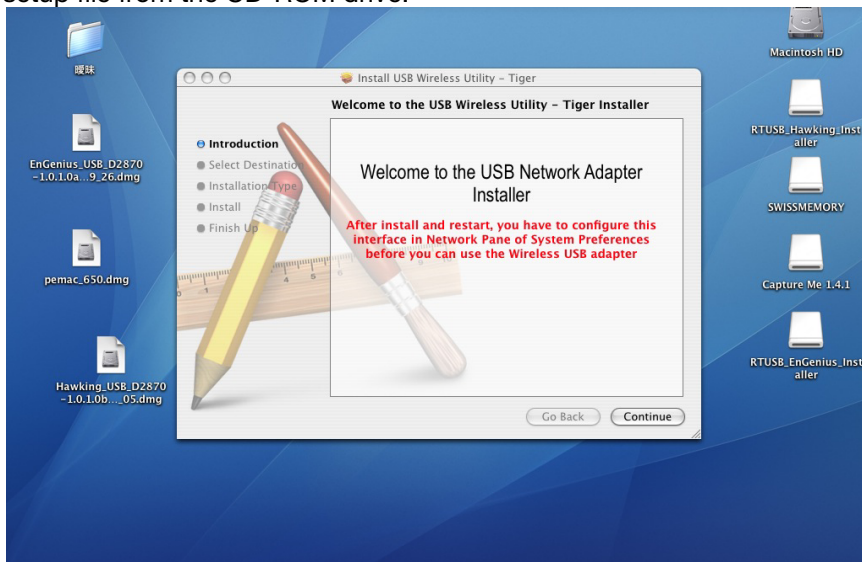
The Profile tab is used to store the settings of multiple Access Points such as home, office, café, etc. When adding a profile you are required to enter a profile name and SSID as well as configure the power-saving mode, network type, RTS/fragmentation threshold and encryption/authentication settings.



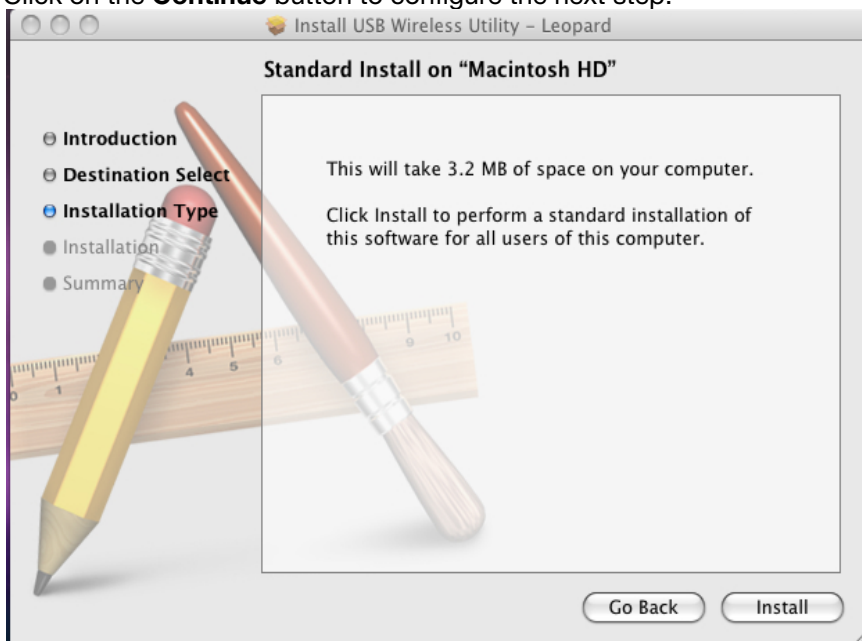
1. **Profile:** Enter a name for the profile; this does not need to be the same as the SSID.
2. **SSID:** Enter the SSID of the network or select one from the drop-down list.
3. **Network Type:** Select Infrastructure from the drop-down list.
4. **TX Power:** Select a transmit power from the drop-down list..
5. Click on the **Apply** button to save the changes.

USB Adapter for MAC OS 10.3, 10.4 and 10.5- Installation

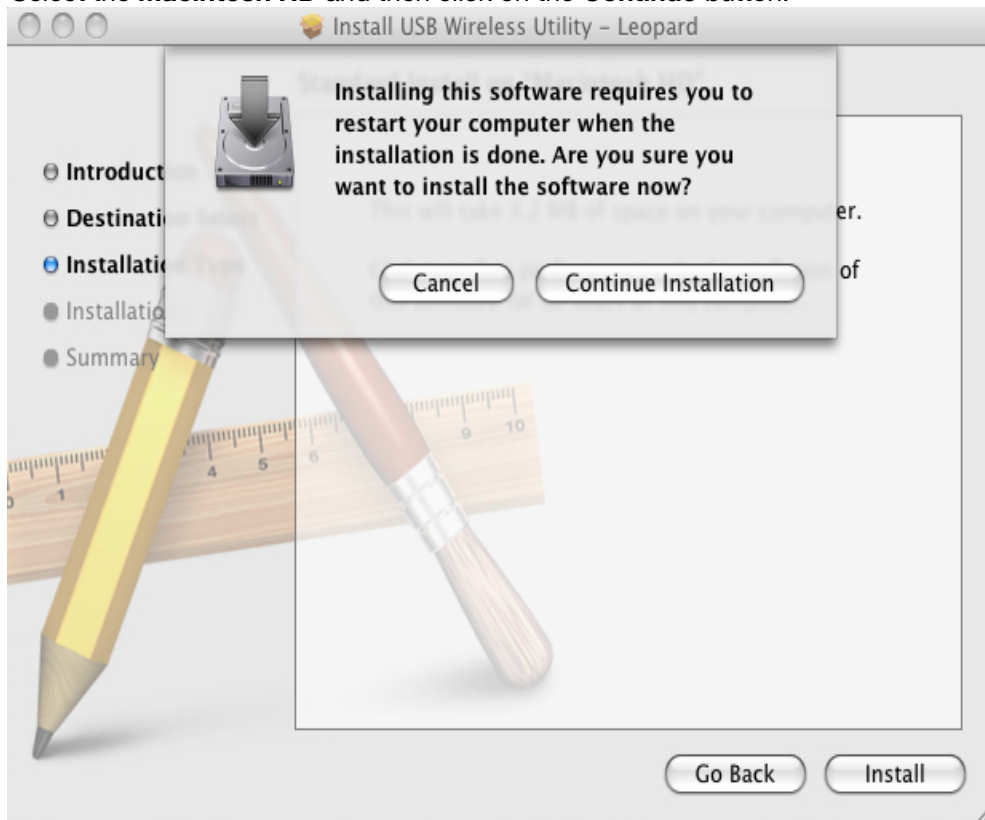
1. Insert the CD-ROM that was provided to you in this package. The setup should run automatically. If the setup does not run automatically, then you must manually select the setup file from the CD-ROM drive.



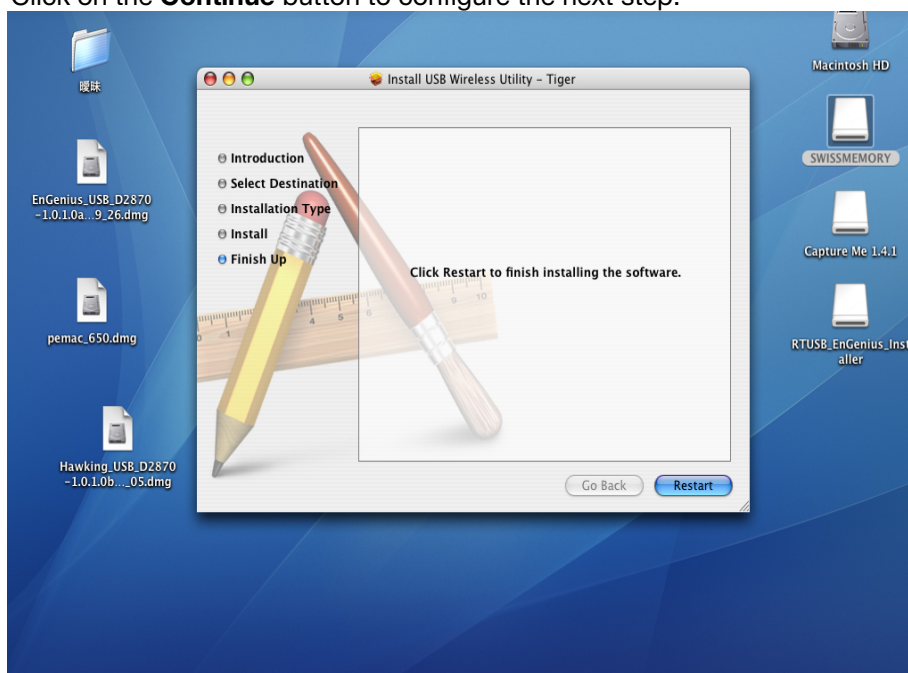
2. Click on the **Continue** button to configure the next step.



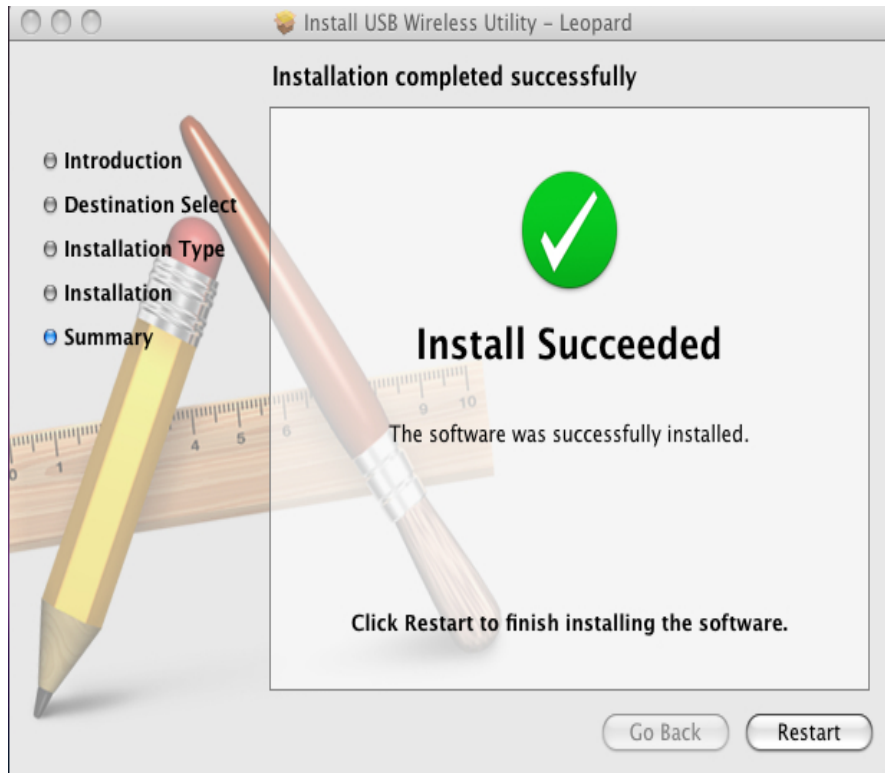
3. Select the **Macintosh HD** and then click on the **Continue** button.



4. Click on the **Continue** button to configure the next step.



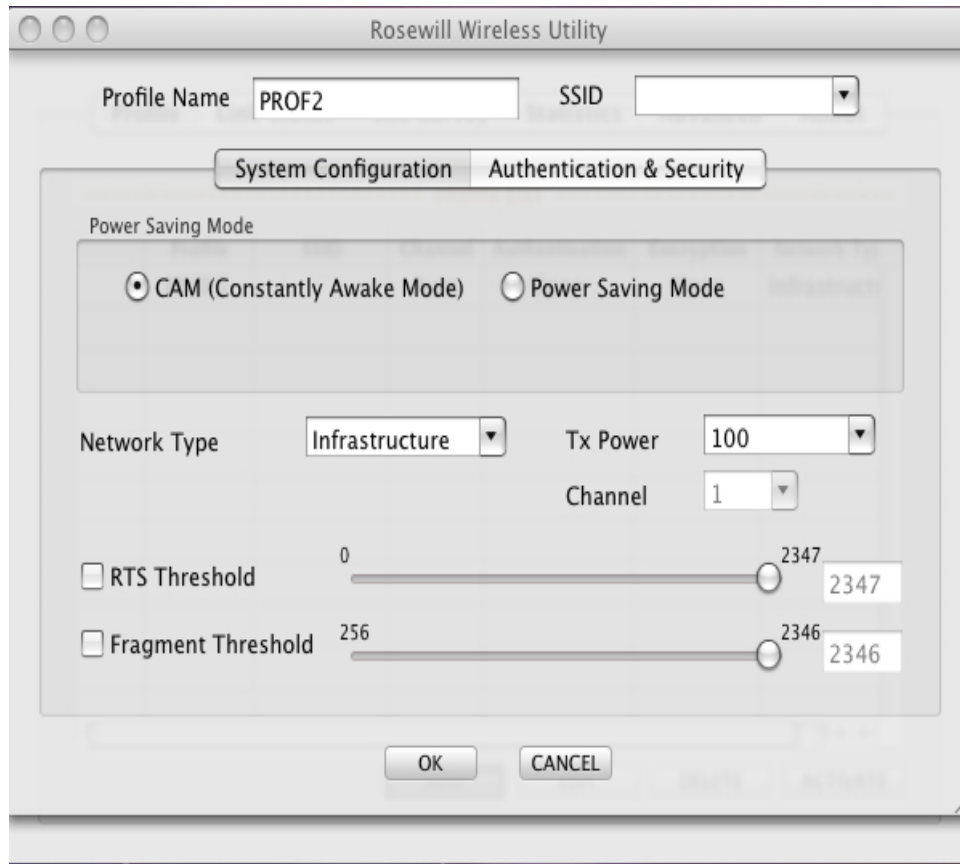
5. The installation is complete. Click on the **Restart** button.



6. Carefully insert the USB adapter into the USB port. MAC OS X will then detect and install the new hardware.
7. The **Rosewill** Client Utility is installed in the **Applications** folder.

USB Adapter Adding a Profile – MAC OS 10.3 10.4 10.5

The Profile tab is used to store the settings of multiple Access Points such as home, office, café, etc. When adding a profile you are required to enter a profile name and SSID as well as configure the power-saving mode, network type, RTS/fragmentation threshold and encryption/authentication settings.



1. **Profile:** Enter a name for the profile; this does not need to be the same as the SSID.
2. **SSID:** Enter the SSID of the network or select one from the drop-down list. The SSID is a unique name shared among all points in your wireless network. The SSID must be identical for all points in the network, and is case-sensitive.
3. **PSM:** Select a power saving mode (PSM) option.
 - CAM (Continuously Awake Mode):** Select this option if your notebook is always connected to the power supply.
 - PSM (Power Saving Mode):** Select this option if your notebook uses its battery power. This option minimizes the battery usage while the network is idle.
4. **Network Type:** Select Infrastructure from the drop-down list.
5. **TX Power:** Select a transmit power from the drop-down list. If your notebook is connected to external power then select 100% or auto, if not, select one of the lower values for power saving.
6. **RTS Threshold:** Place a check in this box if you would like to enable RTS Threshold. Any packet in the RTS/CTS handshake larger than the specified value (bytes) will be discarded.
7. **Fragment Threshold:** Place a check in this box if you would like to enable Fragment Threshold. Any packet larger than the specified value (bytes) will be discarded.
8. Click on the **Apply** button to save the changes.

For advanced configuration, refer to the User's Manual in the CD-ROM provided.