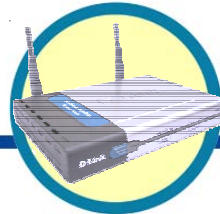


D-Link Quick Installation Guide

This product can be set up using any current web browser, i.e., Internet Explorer 6.0, Netscape Navigator 6.2.3.



DI-754
5GHz Multimode
Wireless Router

Before You Begin

1. If you purchased this router to share your high-speed Internet connection with other computers, you must have either an **Ethernet-based** Cable or DSL modem with an established Internet account from an Internet Service Provider (ISP).
2. It's best to use the same computer that is connected to your modem for configuring the DI-754 Multimode Wireless Router. The DI-754 acts as a DHCP Server by default and will assign all the necessary IP address information on your network. **See Appendix at the end of this Quick Installation Guide or the Manual on the CD-ROM for setting each network adapter to automatically obtain an IP address.**

Check Your Package Contents



DI-754 Multimode Wireless Router



CD-ROM (containing Manual and Warranty)



Ethernet (CAT5 UTP/Straight Through) Cable



5V DC, 3A Power Adapter



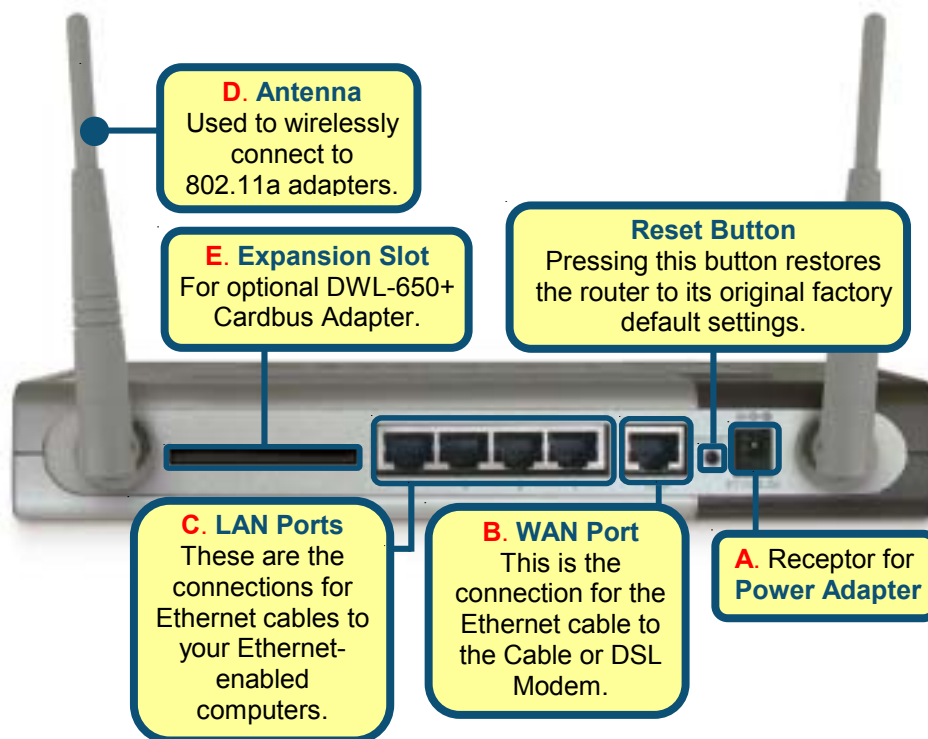
Using a power supply with a different voltage rating will damage and void the warranty for this product.

If any of the above items are missing, please contact your reseller.

1


Connecting The DI-754 Multimode Wireless Router To Your Network

- A.** First, connect the power adapter to the **receptor** at the back panel of the DI-754 and then plug the other end of the power adapter to a wall outlet or power strip. The Power LED will turn **ON** to indicate proper operation.
- B.** Insert one end of an Ethernet cable to the **WAN port** on the back panel of the DI-754 and the other end to the Ethernet port located on your Cable or DSL modem. The WAN LED light will illuminate to indicate proper connection.
- C.** Insert one end of an Ethernet cable to **LAN port 1** on the back panel of the DI-754 and the other end to the Ethernet port on the network adapter in the computer you will use to configure the DI-754. The LED light for LAN Port 1 will illuminate to indicate proper connection. (Note: The LAN ports on the DI-754 will automatically sense the cable type when connecting Ethernet-enabled computer, meaning it will work with either a straight through or cross-over cable.)
- D.** Computers equipped with 802.11a wireless adapters will be able to connect to the DI-754. The DWL-A650 *AirPro* Wireless Cardbus Adapter and the DWL-A520 *AirPro* Wireless PCI Adapter will be able to connect out of the box with the router using their default wireless settings.



1 Continued...

- E. When a D-Link *AirPlus* DWL-650+ Wireless Cardbus Adapter is inserted into the Expansion Slot on the back of the DI-754, computers equipped with 802.11b wireless adapters will be able to connect to the DI-754. The DWL-650+ *AirPlus* Wireless Cardbus Adapter and the DWL-520+ *AirPlus* Wireless PCI Adapter will be able to connect out of the box with the router using their default wireless settings.

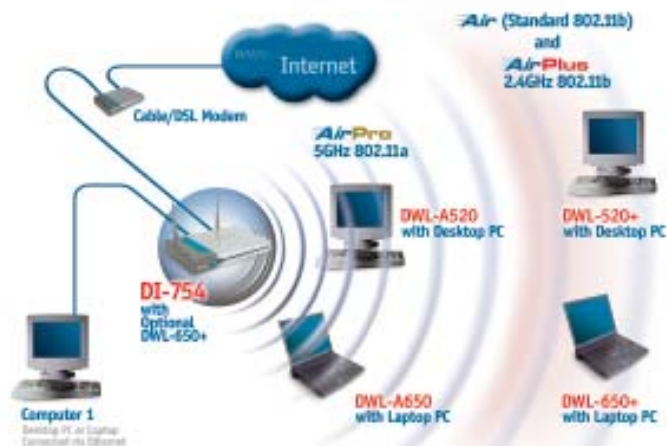
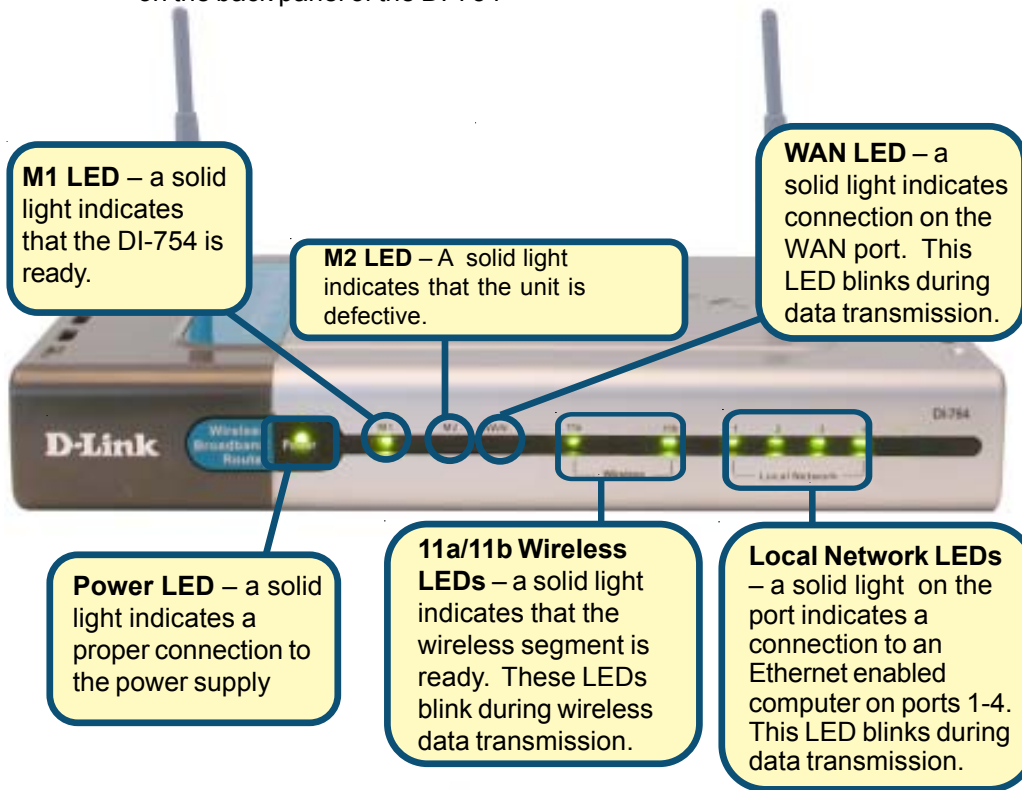
 The Expansion Slot on the DI-754 will only work with a D-Link DWL-650+. Make sure the DI-754 Router is completely powered off before inserting the DWL-650+ into the Expansion Slot



2 Restart Your Computer

3 Connecting Additional Computers To The DI-754

Using additional Ethernet (CAT5 UTP) cables, connect your Ethernet-equipped computers to the remaining Ethernet LAN ports on the back panel of the DI-754



When you have completed the steps in this *Quick Installation Guide*, your connected network should look similar to this:

4 Using The Setup Wizard

Insert the DI-754 CD-ROM

The Install Screen will appear.

Click **Configure DI-754**



If the logon screen does not automatically appear, please follow the step shown below. If the logon screen does appear, proceed to the next screen.

Open your Web browser and type "**http://192.168.0.1**" into the URL address box. Then press the **Enter** or **Return** key.



The logon pop-up screen will appear.

Type "**admin**" for the username and leave the password field blank.



Click **OK**

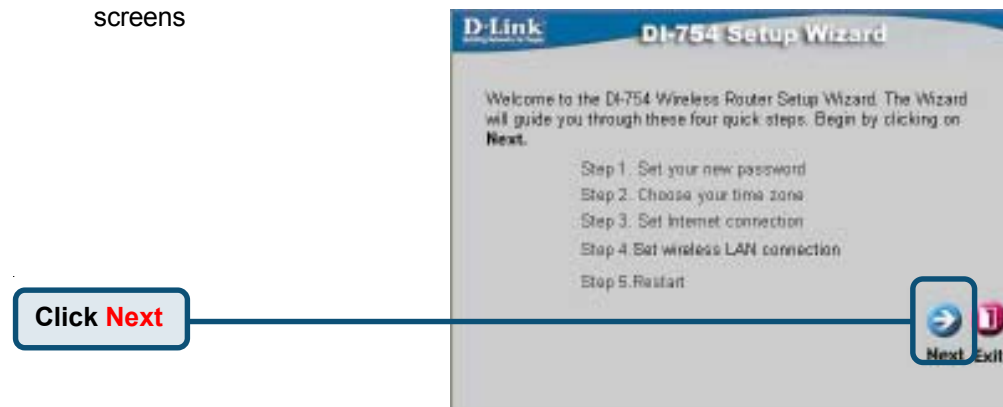
4 The Setup Wizard (continued)

Once you have logged in, the **Home** screen will appear.



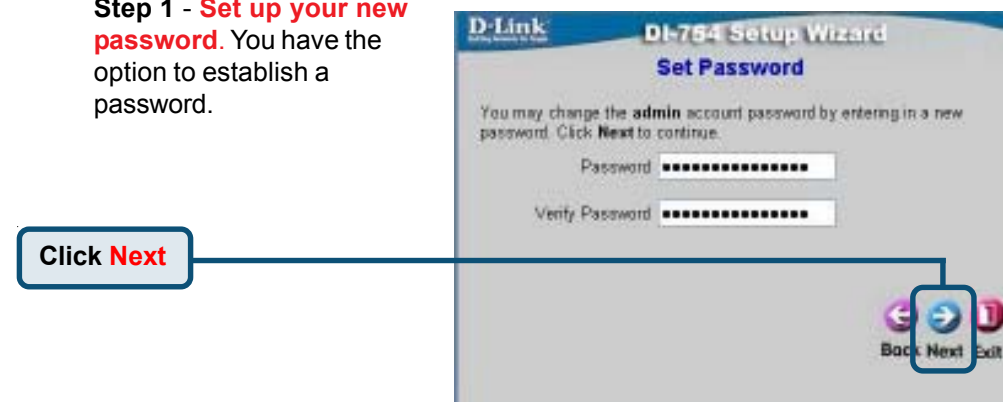
Click **Run Wizard**

You will see the following screens



Click **Next**

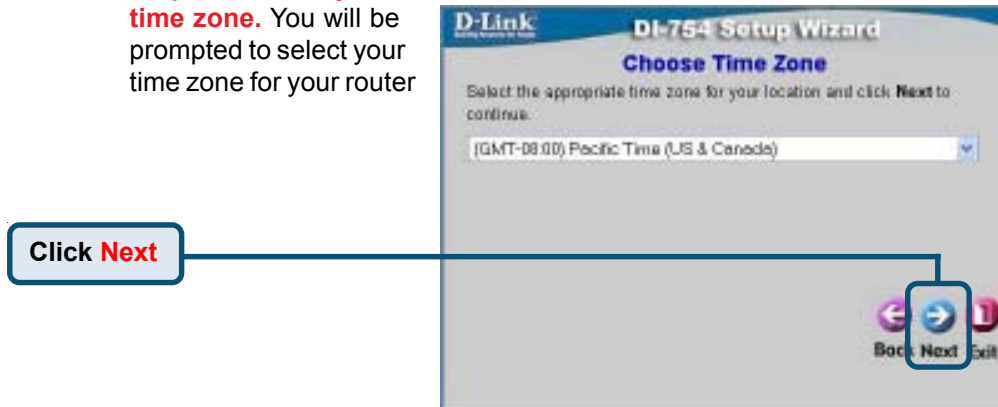
Step 1 - Set up your new password. You have the option to establish a password.



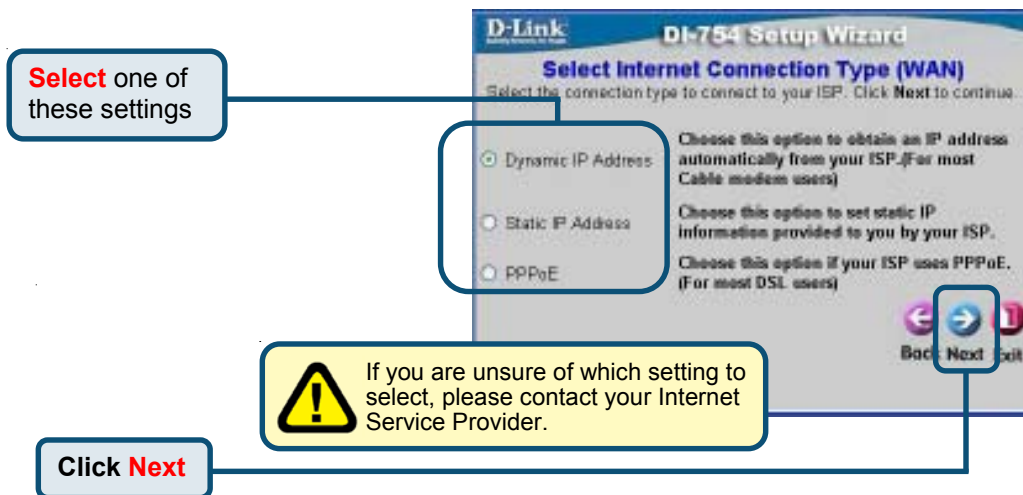
Click **Next**

4 The Setup Wizard (continued)

Step 2 - Choose your time zone. You will be prompted to select your time zone for your router



Step 3 – Select your Internet Connection. You will be prompted to select the type of Internet connection for your router.



4 The Setup Wizard (continued)

If you selected **Dynamic IP Address**, this screen will appear:

Click the **"Clone MAC Address"** button to automatically copy the MAC address of the network adapter in your computer. You can also manually type in the MAC address.

D-Link
DI-754 Setup Wizard
Set Dynamic IP Address

If your ISP require you to enter a specific host name or specific MAC address, please enter it in. The **Clone MAC Address** button is used to copy the MAC address of your Ethernet adapter to the DI-754 Wireless Router. Click **Next** to continue.

Host Name: DI-754 Wireless Router (optional)

MAC: 00 - 03 - 2F - 08 - 07 - 0B (optional)

Clone MAC Address

Back Next Exit

What is a MAC address? Each network adapter has a discrete Media Access Control (MAC) address. Note that some computers and peripherals may already include built-in network adapters.

Click **Next**

If your ISP requires a **Static IP Address**, and this option is selected, then this screen will appear:

Enter the IP address information originally provided to you by your ISP. You will need to complete all the required fields.

D-Link
DI-754 Setup Wizard
Set Static IP Address

Enter in the static IP information provided to you by your ISP. Click **Next** to continue.

WAN IP Address: 0.0.0.0

WAN Subnet Mask: 0.0.0.0

WAN Gateway Address: 0.0.0.0

Primary DNS Address: 0.0.0.0

Secondary DNS Address: 0.0.0.0 (optional)

Do not use the numbers displayed in these fields. They are only shown as an example.


Back Next Exit

Click **Next**

4

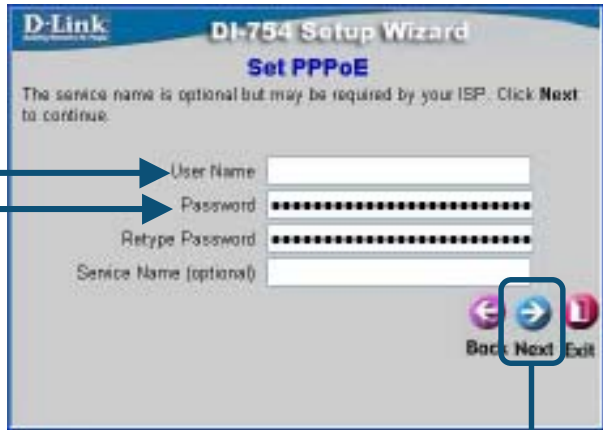
The Setup Wizard (continued)

If your ISP uses **PPPoE** (Point-to-Point Protocol over Ethernet), and this option is selected, then this screen will appear:

 Please be sure to remove any existing PPPoE client software installed on your computers.

Enter in the username and password provided to you by your ISP.

Click **Next**



Step 4 – Wireless Setup.

The default wireless settings for your 802.11a wireless network are:
SSID = **default**
Channel = **52**
Turbo Mode = **Off**
You can change these settings to match an existing wireless network.

Click **Next**



4 The Setup Wizard (continued)

If you wish to use encryption for your 802.11a network, the DI-754 is capable of three levels of wireless encryption - 64-bit, 128-bit, and 152-bit. **By default the encryption is disabled.** You can change the encryption settings for more secure wireless communication.

D-Link
DI-754 Setup Wizard
Set 802.11a Wireless LAN Connection

If you wish to use encryption, enable it here and enter the encryption Key Values. Click **Next** to continue.

WEP Enabled Disabled


Wep encryption 64 bit


Key 00000000

Input 10 HEX characters (HEX is 0-9, A-F, or a-f)

Back Next Exit

Click **Next**

 If you enable encryption on the DI-754 make sure to also enable encryption on all 802.11a wireless clients or wireless connection will not be established

 The following steps are required if you have added the DWL-650+ Wireless Cardbus adapter in the Expansion Slot on the DI-754.

The default wireless settings for your 802.11b wireless network are:
SSID = **default**
Channel = **6**
You can change these settings to match an existing wireless network.

D-Link
DI-754 Setup Wizard
Set 802.11b+ Wireless LAN Connection

Enter in the SSID name and Channel number to be used for the Wireless Access Point. Click **Next** to continue.

SSID default

Channel 6

Back Next Exit

Click **Next**

4

The Setup Wizard (continued)

If you wish to use encryption for your 802.11b network, the DI-754 is capable of three levels of wireless encryption - 64-bit, 128-bit, and 256-bit. **By default the encryption is disabled.** You can change the encryption settings for more secure wireless communication.



Click **Next**



If you enable encryption on the DI-754 make sure to also enable encryption on all 802.11b wireless clients or wireless connection will not be established

5

Your Setup is Complete!



Click **Restart**

5 Continued...



You will be returned to the **Home** tab.

Test your Internet connection.

The screenshot shows a browser window displaying the "D-Link DI-754 5GHz Multimode Wireless Router" setup wizard. The "Home" tab is selected. A callout box on the left contains the text "Click Exit" with "Exit" in red. A line connects this callout to the "Close" button in the top right corner of the browser window.

Then **relaunch** your Web browser (i.e., *Internet Explorer* or *Netscape Navigator*), to link to your favorite Web site to test your Internet connection.

For additional settings or information, select **HELP** or refer to the manual located on the CD.

APPENDIX

To connect to the DI-754, make sure the network adapter in your computer is configured properly. Here's how to configure the network adapter to obtain an IP address automatically for the DI-754 5GHz Multimode Wireless Router.

For **Microsoft Windows XP**:
Go to **Start > right click on My Network Places > select Properties > Double-click on the Network Connection** associated with the Ethernet adapter (i.e., D-Link DFE-530TX+).

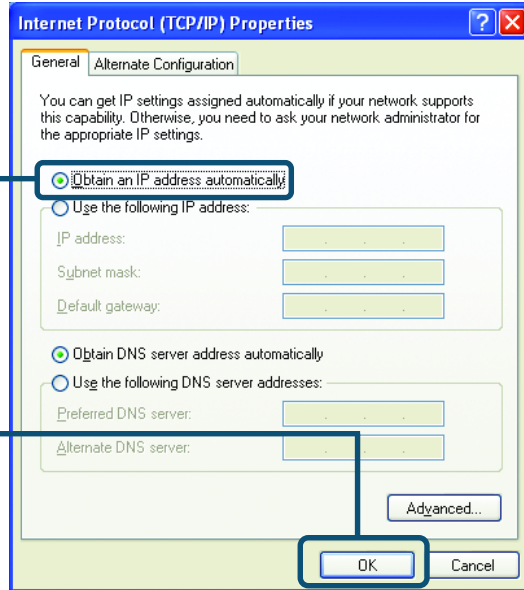
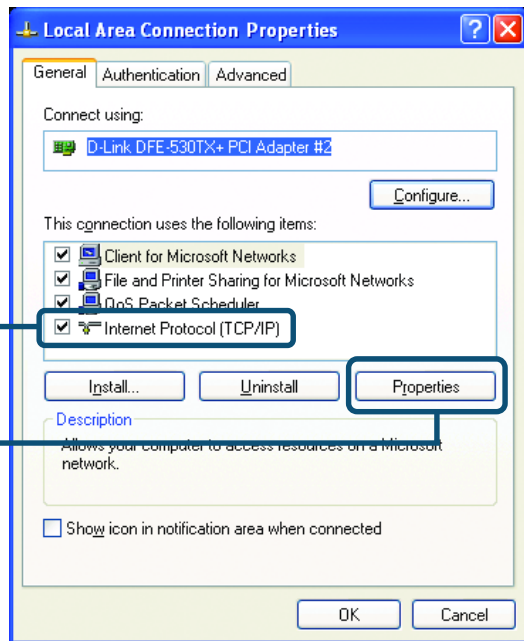
Click Internet Protocol (TCP/IP)

Click Properties

Select Obtain an IP address automatically

Click OK

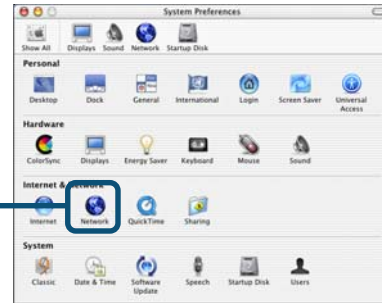
Restart your computer



For **Apple Macintosh OS X:**

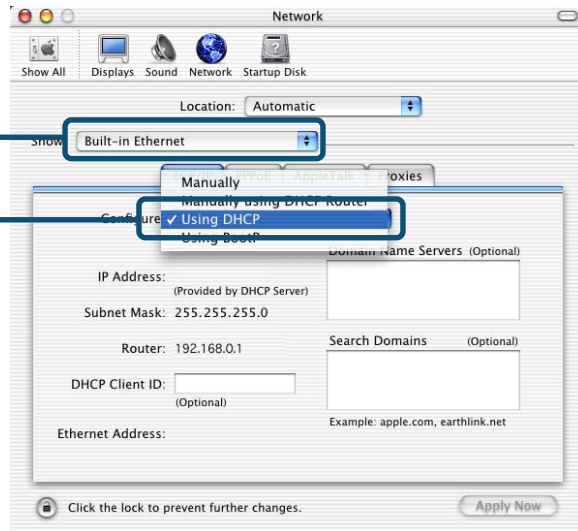
Go to the **Apple Menu**
Click on **Network**
and **Select System Preferences**

Click on **Network**



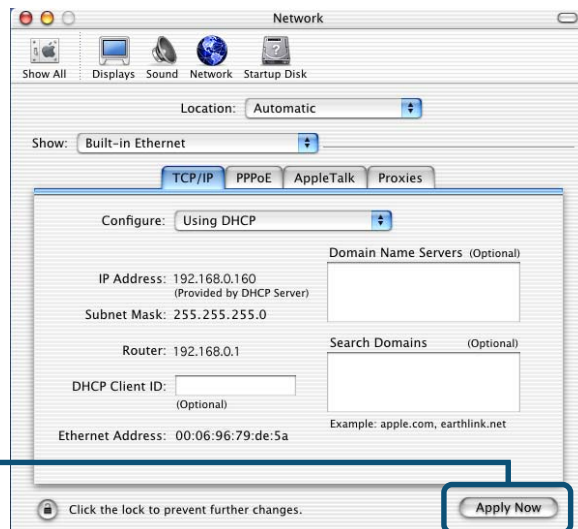
Select **Built-in Ethernet** in the Show pull-down menu

Select **Using DHCP** in the Configure pull-down menu



Click on **Apply Now**

The IP address information, the Subnet Mask, the Router's IP address and the Ethernet adapter address will appear



NOTES

Technical Support

You can find the most recent software and user documentation on the **D-Link** website.

D-Link provides free technical support for customers within the United States for the duration of the warranty period on this product.

U.S. customers can contact **D-Link** technical support through our web site or by phone.

D-Link Technical Support over the Telephone:

(877) 453-5465

24 hours a day, seven days a week

D-Link Technical Support over the Internet:

<http://support.dlink.com>

email: support@dlink.com

D-Link[®]
Building Networks for People