

# iPAQ Networking Software



## User Guide

### Copyrights, Trademarks, and Disclaimer

© 2001 Compaq Computer Corporation

COMPAQ and the Compaq logo registered in U.S. Patent and Trademark Office.

iPAQ is a trademark of Compaq Information Technologies Group, L.P.

Microsoft and Windows are trademarks of Microsoft Corporation.

All other product names mentioned herein may be trademarks or registered trademarks of their respective companies.

Compaq shall not be liable for technical or editorial errors or omissions contained herein. The information in this document is subject to change without notice.

The information in this publication is subject to change without notice and is provided "AS IS" WITHOUT WARRANTY OF ANY KIND. THE ENTIRE RISK ARISING OUT OF THE USE OF THIS INFORMATION REMAINS WITH RECIPIENT. IN NO EVENT SHALL COMPAQ BE LIABLE FOR ANY DIRECT, CONSEQUENTIAL, INCIDENTAL, SPECIAL, PUNITIVE, OR OTHER DAMAGES WHATSOEVER (INCLUDING WITHOUT LIMITATION, DAMAGES FOR LOSS OF BUSINESS PROFITS, BUSINESS INTERRUPTION, OR LOSS OF BUSINESS INFORMATION), EVEN IF COMPAQ HAS BEEN ADVISED OF THE POSSIBILITY OF SUCH DAMAGES. THE FOREGOING SHALL APPLY REGARDLESS OF THE NEGLIGENCE OR OTHER FAULT OF EITHER PARTY AND REGARDLESS OF WHETHER SUCH LIABILITY SOUNDS IN CONTRACT, NEGLIGENCE, TORT, OR ANY OTHER THEORY OF LEGAL LIABILITY, AND NOTWITHSTANDING ANY FAILURE OF ESSENTIAL PURPOSE OF ANY LIMITED REMEDY.

The limited warranties for Compaq products are exclusively set forth in the documentation accompanying such products. Nothing herein should be construed as constituting a further or additional warranty.

iPAQ Networking Software

User Guide

First Edition (June 2001)

# Contents

---

Introduction	3	Selecting a Dial-Up Networking Profile	29
Installation Overview	3	Stopping the ICM Server	30
Installing the Drivers	4	Reconnecting to the ICM Server	30
Installing the Software	5	Setting Up File Sharing	30
Installing the Software	5	Setting Up Printer Sharing	32
Installing the Software	13		
Adding Appliances	19		
Adding PCs or Changing Adapter Settings	19		
Configuring Internet Access	19		
Internet Sharing with a Broadband Connection	19		
Configuration for Some DSL Subscribers	20		
Internet Sharing with a Dial-Up Connection	20		
Configuration for AOL Subscribers	21		
Additional Software Features	22		
System Tray Icons	22		
Bridging	22		
Using WinGate Gatekeeper	22		
Using the GateKeeper Activity Window	23		
Using the GateKeeper History Window	23		
Using the GateKeeper Dialer Options	24		
Using the GateKeeper Stop/Start Options	25		
Internet Connection Monitor	26		
Connecting to and Disconnecting from the Internet	26		
Configuring the ICM Server IP Address and Port	26		
Configuring IP Address Ranges	27		
Testing Network Connections	28		
Configuring Connections to the ICM Server	28		

# Introduction

---

Welcome to iPAQ Networking. The Compaq family of easy-to-install iPAQ Networking products is designed to help you simplify your life and connect your world.

With iPAQ Networking, you can connect all of the PCs in your home or office for simultaneous access to files, printers, and the Internet.

This guide explains how to perform the following tasks:

- > Installing the hardware drivers, which run any of the different iPAQ Networking components listed on this iPAQ Networking CD
- > Installing the networking software, which helps set up basic networking features as well as Internet connection sharing
- > Configuring other network features, including file sharing, printer sharing, and special types of Internet connections

# Installation Overview

---

When setting up your network for the first time, it's important to perform the tasks in the order they're presented. To change your settings later, you can easily go back and do so without repeating the entire setup process. Here are the steps you must follow to complete installation of your networking product:

- > **Install the hardware drivers.** This should be done before installing the hardware.
- > **Install the hardware.** If the hardware drivers are installed first, the system will automatically recognize the hardware and associate it with the correct drivers. See the Quick Setup Guides provided with your hardware, or the **Hardware Documentation** section of this CD.
- > **Install the software.** The main software installation options are covered under **Install the Software** later in this guide. This helps you define the networking characteristics of your machine and set up Internet connection sharing.
- > **Configure and install other options.** Procedures later in this guide help you set up additional networking options, such as printer and file sharing, or special types of Internet connections.

# Installing the Drivers

1. Insert the **iPAQ Networking CD** into the CD-ROM. The iPAQ Networking menu should display automatically. (Screen appearance may vary slightly depending upon the iPAQ Networking product you purchased.)



**Note:** If the menu does not appear, select the **Start** button and choose **Run**. Type in "**D:\setup.exe**" where "**D:\**" is the location of your CD ROM drive. Then click **OK** to start the iPAQ Networking menu.

2. Click **Install Drivers** to start the driver installation software.

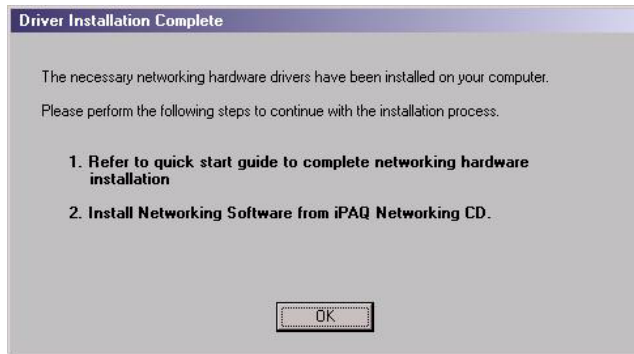
The opening panel of the Network Driver Installation Utility is displayed.



3. Click **Install Drivers** in this panel to start installing the drivers. A progress indicator is displayed while the files are being installed.



- When installation is complete, the Driver Installation Complete window is displayed. Click **OK** to complete the installation.



Complete the hardware installation before proceeding with software installation.

# Installing the Software

## Configuring the Internet-Sharing PC

**Note:** The software must be installed on the PC that will be designated as the Internet-sharing PC before it is installed on the other computers that comprise your network.

Do not begin this procedure until your network adapters are properly connected. Confirm that your Internet account is active and can be accessed from your Internet-sharing PC.

The Internet Sharing PC must have Microsoft® Windows® 98 or higher installed to use the iPAQ Networking Software.

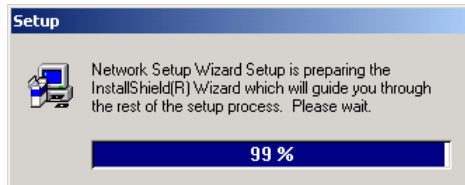
### 1. Install Networking Software

Insert the **iPAQ Networking CD** into the CD-ROM. The iPAQ Networking menu is displayed. (Screen appearance may vary slightly depending upon the iPAQ Networking product you purchased.)

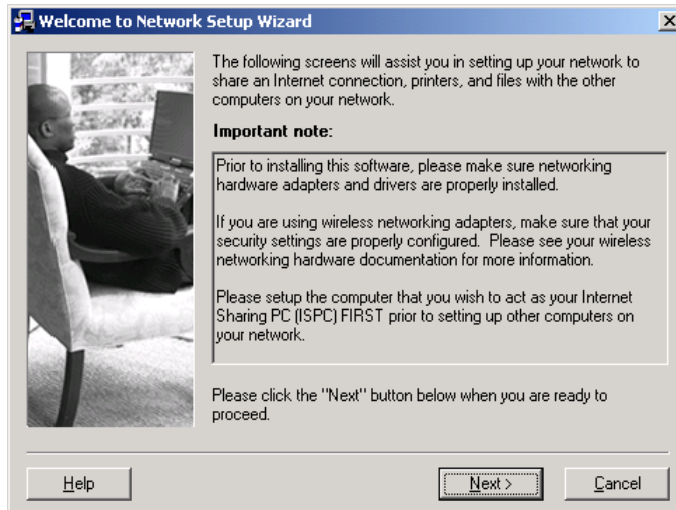


Click **Install Networking Software**.

A progress indicator is displayed and the system begins copying program files.

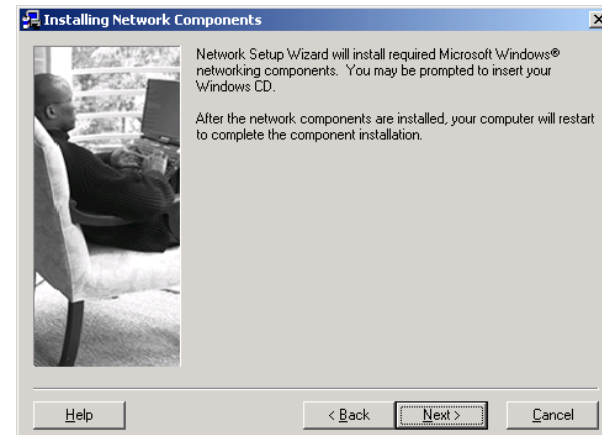


The Network Setup Wizard is displayed.



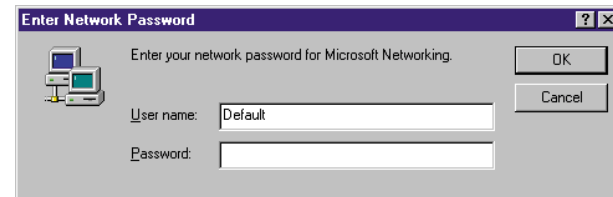
Click **Next**.

The Installing Network Components window is displayed.



Click **Next**.

Several progress indicators are displayed while the software installs. When finished, the program automatically restarts your PC and the Network Password dialog box is displayed.



If you have a network password, type it into the **Password** field and click **OK**. If you do not have a network password, just click **OK**.

**Note:** *Do not click Cancel.* If you click Cancel, your PC will be unable to access network resources.

## 2. Enter Computer Name

When your computer restarts, the Enter Computer Name window is displayed. This window proposes a computer name and a workgroup name that will be used to identify your computer on the network.



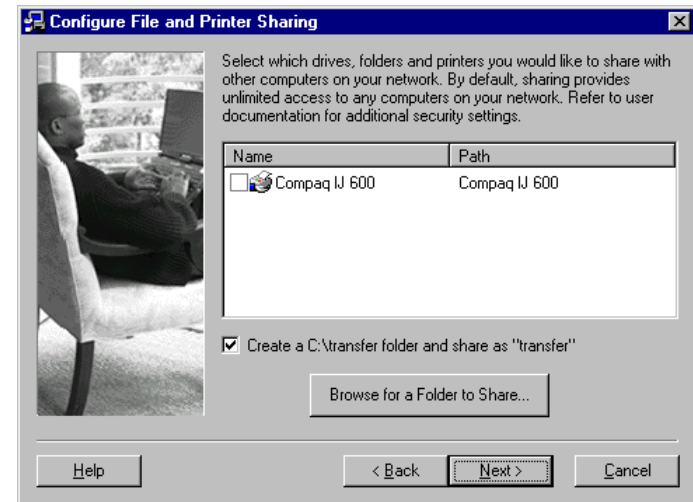
- If you want to use a different Computer Name, type it into the **Computer Name** field.
- If you want to use a different Workgroup Name, click **Use the workgroup specified below** and type a different name in the field.

**Note:** All computers must be located in the same workgroup so they can recognize and communicate with each other on the local network. For your workgroup, we recommend using the default name to allow all computers on the network to easily find each other.

Click **Next**.

## 3. Configure Printer and File Sharing

The Configure File and Printer Sharing window is displayed.



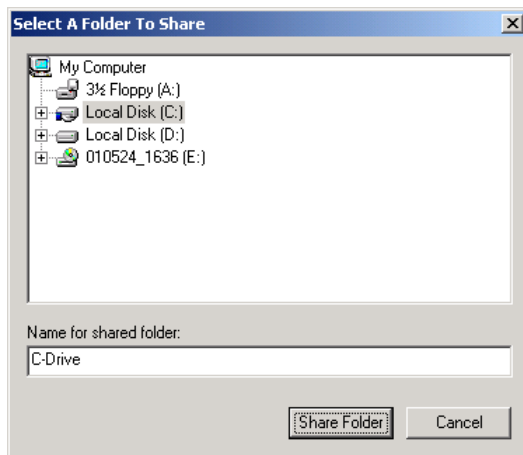
Designate the files and printers you want to share. Resources that are checked and displayed with a blue serving hand are shared on the network. To cancel sharing on a resource, click the checkbox so the checkmark is removed.

A shared transfer folder is created on the computer's hard drive by default. To create transfer folders on each network PC, click the **Create Transfer Folder** checkbox. If you do not want the Network Setup Wizard to create this shared folder, deselect the checkbox.

If you do not wish to share a specific folder, printer, or other device attached to your computer, please proceed to step 4.

**Note:** By default, full access is granted to all users on your network for each folder or printer you share. You may establish a password to restrict access. Please refer to the sections on **Setting Up File Sharing** on page 30 or **Setting Up Printer Sharing** on page 32 for instructions on setting up folder passwords.

To share folders with other computers on the network, click **Share Folder**. The Select a Folder to Share window is displayed.



- Select a folder from the list.
- Type a name for the shared folder into the **Name for shared folder** field.
- Click **Share Folder**.  
The Configure File and Printer Sharing window is displayed again.

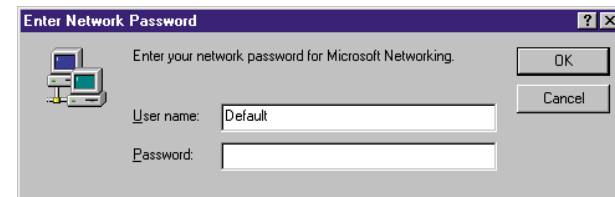
To share a printer or other device attached to your computer, click **Share Folder**.

The Select a Folder to Share window is displayed again.

- Select a printer or other device from the list.
- Click **Share Folder**.  
The Configure File and Printer Sharing window is displayed again.

Click **Next**.

The PC will restart automatically. The Network Password dialog box is displayed.



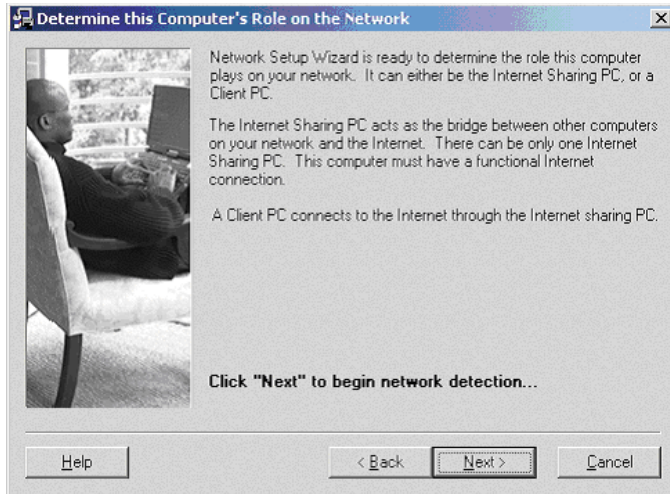
If you have a network password, type it into the **Password** field and click **OK**. If you do not have a network password, just click **OK**.

**Note:** **Do not click Cancel**. If you click Cancel, your PC will be unable to access network resources.



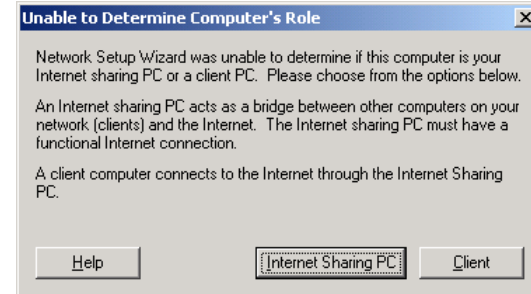
#### 4. Determine Computer's Role

After the restart, the Determine this Computer's Role window is displayed.



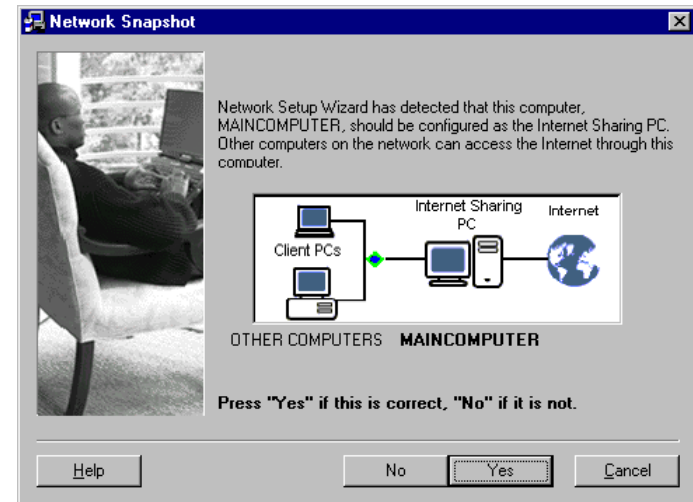
Click **Next**.

If the Network Setup Wizard is unable to determine the role of this computer, the following window will be displayed.

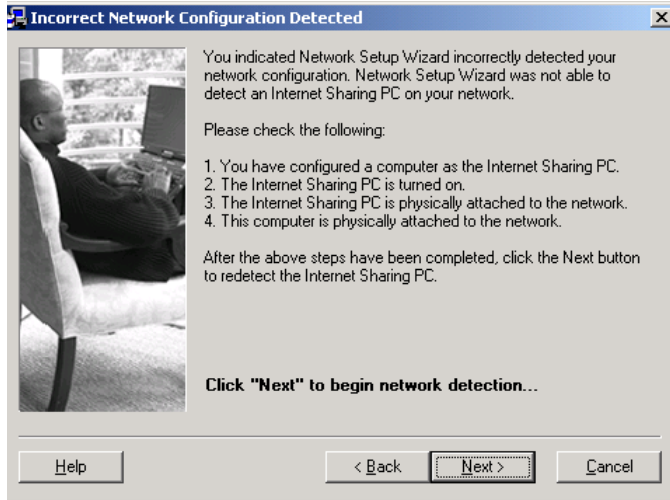


Click **Internet Sharing PC** if this window is displayed.

The Network Snapshot window is displayed.

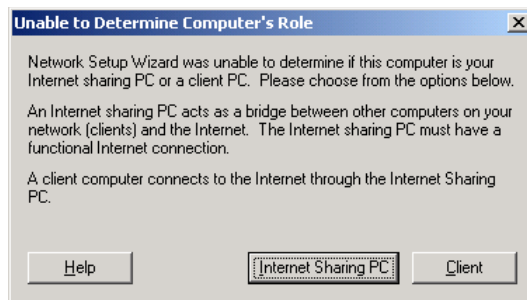


If this configuration is correct, click **Yes**. If it is incorrect, click **No** and the Incorrect Network Configuration window is displayed.



Follow the instructions on the screen, when finished, click **Next**.

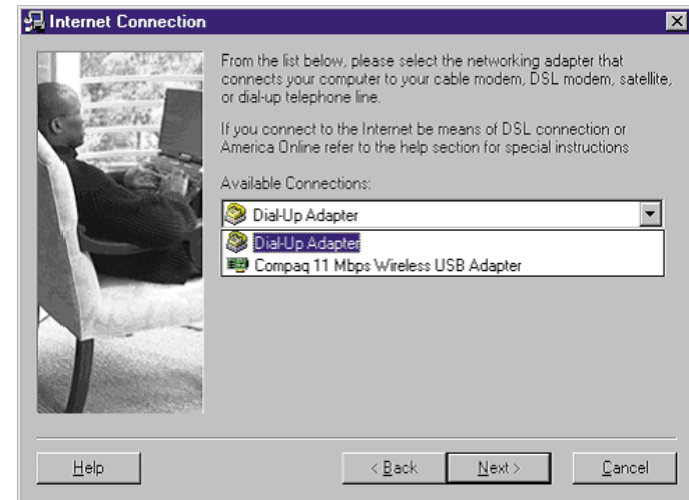
The Network Snapshot window will be displayed again. If this configuration is correct, click **Yes**. If not, click **No** and the Unable to Determine Computer's Role screen will appear.



Click **Internet Sharing PC** if this window is displayed.

## 5. Select Your Internet Connection

When you have established the network configuration, the Internet Connection window is displayed.

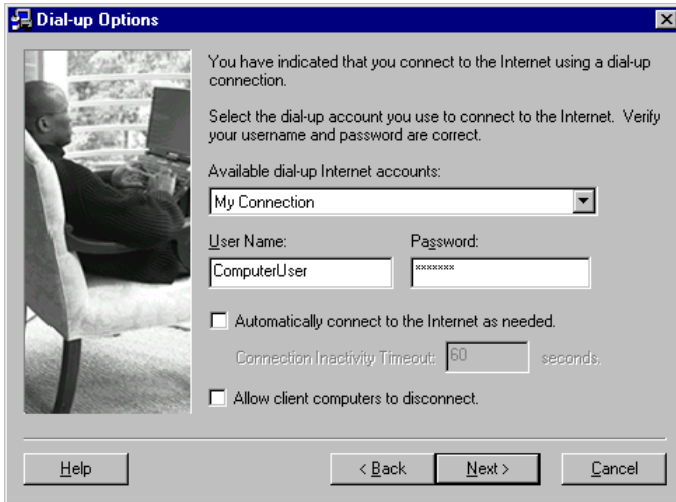


Under **Available Connections**, select the correct network interface card or adapter from the drop-down list.

If you selected a dial-up connection, the Dial-up Options window is displayed. If you did not select a dial-up connection, proceed to step 6.

**Note:** DSL users who use a logon window to connect to the Internet should select Dial-up Adapter as their connection.

AOL users who use AOL dial-up service should select Dial-up Adapter for AOL. For more information, see page 21.

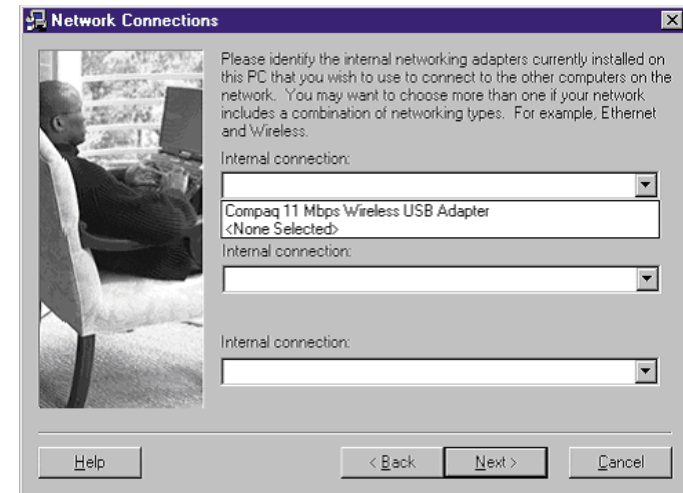


- Select a default dial-up profile from the **Available dial-up Internet accounts** pick list. This is the profile that will be used for your internet connection.
- If you would like the computer to automatically supply your user name and password when you connect (so you don't have to type them each time you connect to the Internet) type your user name into the **User Name** field and type your password into the **Password** field.
- To allow automatic connection to the Internet whenever one of the client computers on the network requests access, click the **Automatically connect to Internet as needed** checkbox.
- To allow the Internet connection to be disconnected from a client computer, click the **Allow client computers to disconnect** checkbox.

Click **Next**.

The **Internal Network Connections** window is displayed.

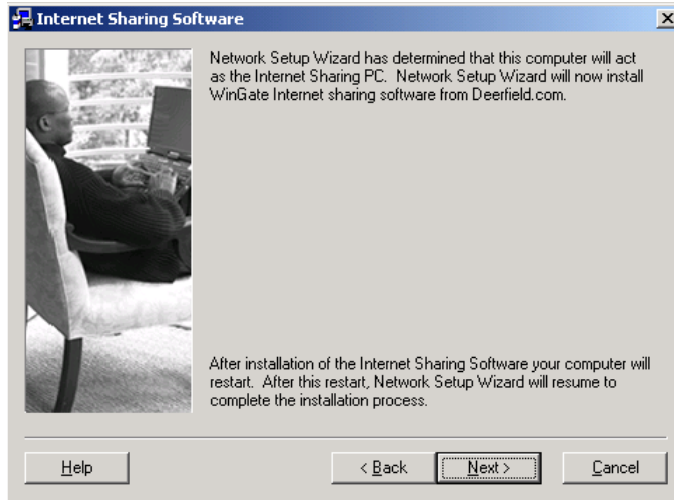
## 6. Select Internal Network Connections



- Select your adapter from the first **Internal connection** pick list.
- If you have more than one adapter and wish to use it on the network, you can select additional adapters in the second and third Internal connection pick lists.

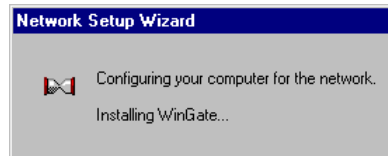
Click **Next**.

The **Internet Sharing Software** window is displayed.

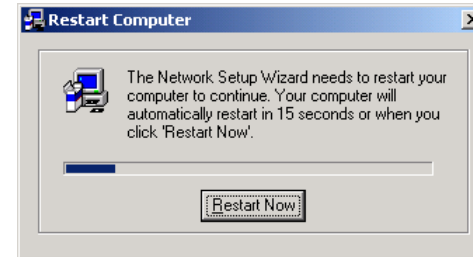


Click **Next**.

A progress indicator is displayed while the components are being installed.

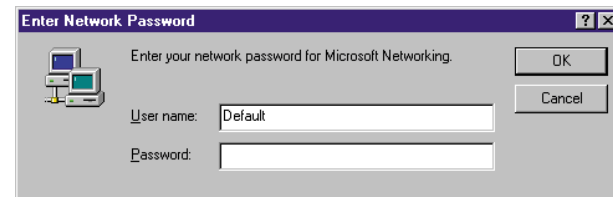


When installation is complete, a Restart window is displayed.



Click **Restart Now**, or wait for the PC to restart automatically.

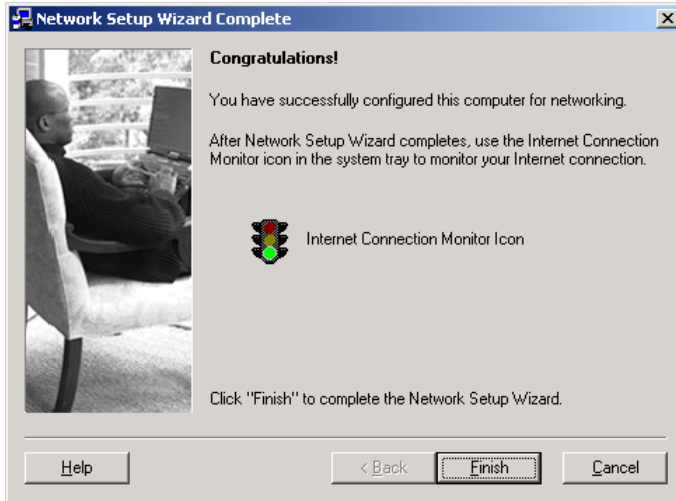
The Network Password dialog box is displayed



If you have a network password, type it into the **Password** field and click **OK**. If you do not have a network password, just click **OK**.

The Network Setup Wizard Complete window is displayed.

**Note:** ***Do not click Cancel.*** If you click Cancel, your PC will be unable to access network resources.



7. Click **Finish**.  
The Internet Connection Monitor icon is displayed in the Microsoft Windows System Tray.

## Configuring Client PCs

If you are installing Internet connection sharing, complete this procedure for each client computer on your network that will share the Internet-sharing PC's Internet connection.

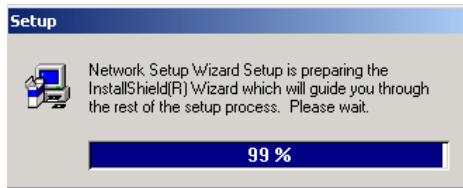
**Note:** Do not begin this procedure until your network adapters are properly connected. Confirm that your Internet account is active and can be accessed from your Internet-sharing PC.

### 1. Install Networking Software

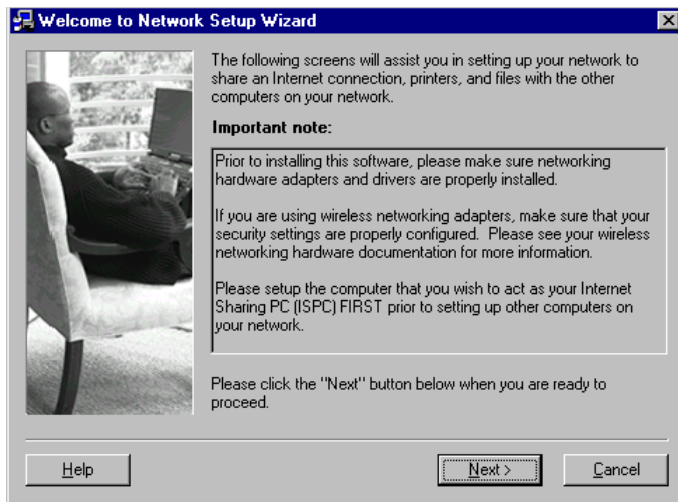
Insert the **iPAQ Networking CD** into the CD-ROM. The iPAQ Networking menu is displayed. (Screen appearance may vary slightly depending upon the iPAQ Networking product you purchased.)



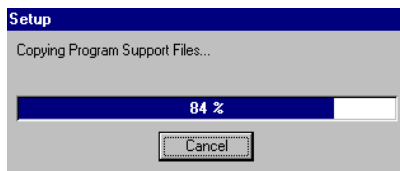
Click **Install Networking Software**.  
A progress indicator is displayed while the files are installed.



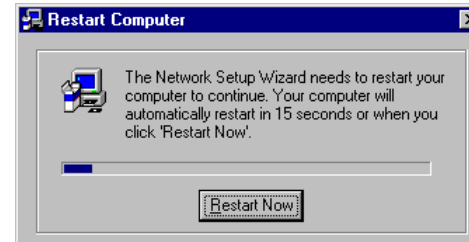
When installation is complete, the Network Setup Wizard window is displayed.



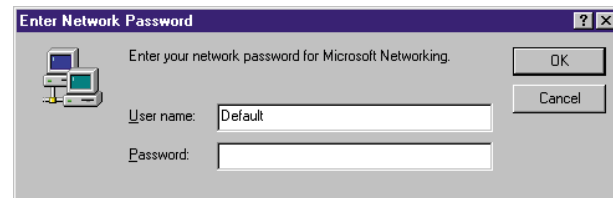
Click **Next**.  
A progress indicator displays while software is installing.



When installation is complete, a Restart window is displayed.



Click **Restart Now**, or wait for the PC to restart automatically.  
The Network Password dialog box is displayed.



If you have a network password, type it into the **Password** field and click **OK**. If you do not have a network password, just click **OK**.

**Note:** ***Do not click Cancel.*** If you click Cancel, your PC will be unable to access network resources.

The Enter Computer Name window is displayed.



## 2. Enter Computer Name

When your computer restarts, the Enter Computer Name window is displayed. This window proposes a computer name and a workgroup name that will be used to identify your computer on the network.



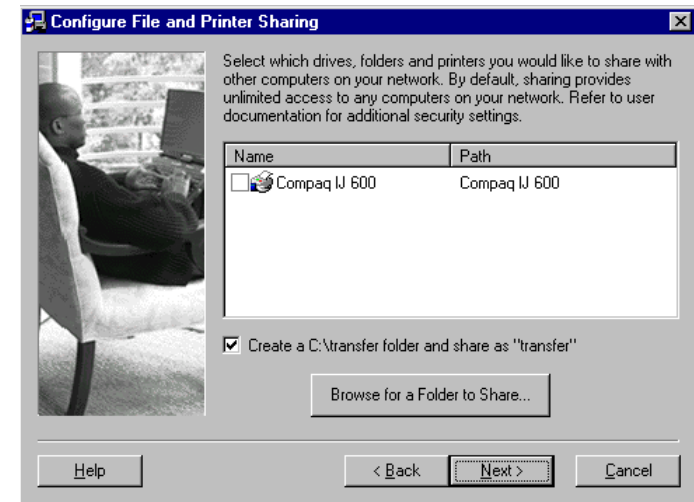
- If you want to use a different Computer Name, type it into the **Computer Name** field.
- If you want to use a different Workgroup Name, click **Use the workgroup specified below** and type a different name in the field.

**Note:** All computers must be located in the same workgroup so they can recognize and communicate with each other on the local network. For your workgroup, we recommend using the default name to allow all computers on the network to easily find each other.

Click **Next**.

## 3. Configure Printer and File Sharing

The Configure File and Printer Sharing window is displayed.



Designate the printers and files you want to share. Resources that are checked and displayed with a blue serving hand are shared on the network. To cancel sharing on a resource, click the checkbox to remove the checkmark.

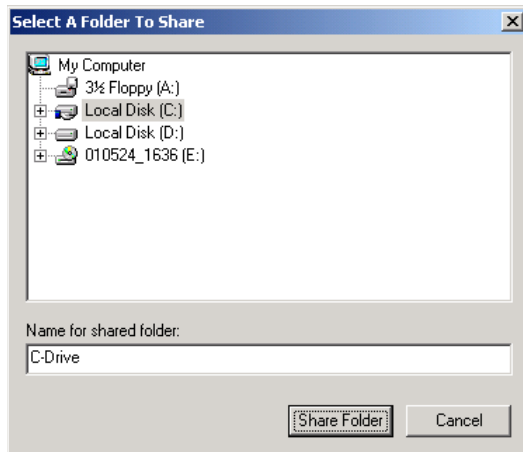
A shared transfer folder is created on the computer's hard drive by default. Deselect this option's checkbox if you do not want the Network Setup Wizard to create this shared folder.

If you do not wish to share a folder, printer, or other device attached to your computer, please proceed to step 4.

**Note:** By default, full access is granted to all users on your network for each folder or printer you share. You may establish a password to restrict access. Please refer to the sections on **Setting Up File Sharing** on page 30 or **Setting Up Printer Sharing** on page 32 for instructions on setting up folder passwords.

To share folders with other computers on the network, click **Share Folder**.

The Select a Folder to Share window is displayed.



- Select a folder in the list.
- Type a name for the shared folder into the **Name for shared folder** field.
- Click **Share Folder**.  
The Configure File and Printer Sharing window is displayed again.

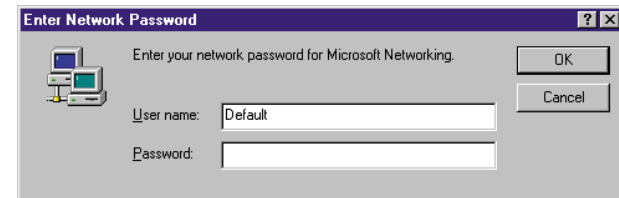
To share a printer or other device attached to your computer, click **Share Folder**.

The Select a Folder to Share window is displayed again.

- Select a printer or other device on the list.
- Click **Share Folder**.  
The Configure File and Printer Sharing window is displayed again.

Click **Next**.

The PC will restart automatically. The Network Password dialog box is displayed.



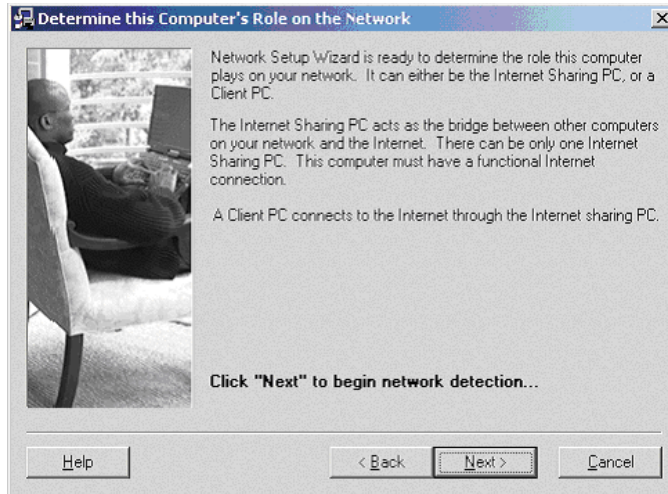
If you have a network password, type it into the **Password** field and click **OK**. If you do not have a network password, just click **OK**.

**Note:** **Do not click Cancel.** If you click Cancel, your PC will be unable to access network resources.



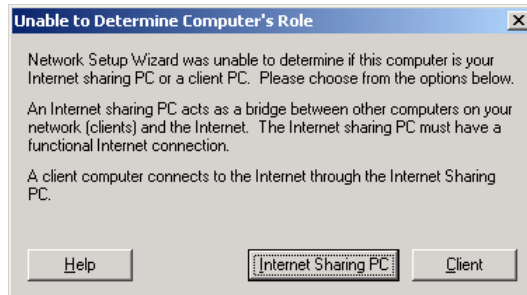
#### 4. Determine Computer's Role

After the restart, the Determine this Computer's Role window is displayed.



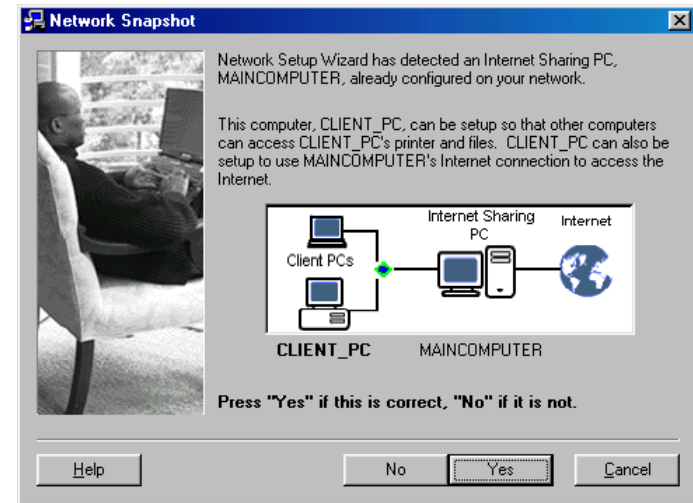
Click **Next**.

If the Network Setup Wizard is unable to determine the role of this computer, the following window will be displayed.

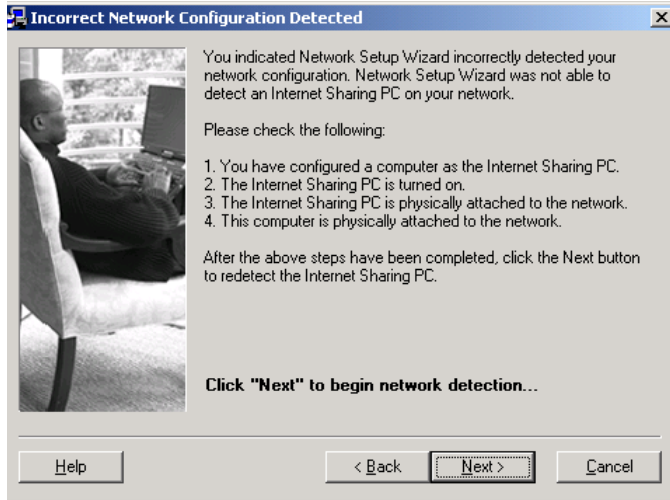


Click **Client** if this window is displayed.

The Network Snapshot window is displayed.

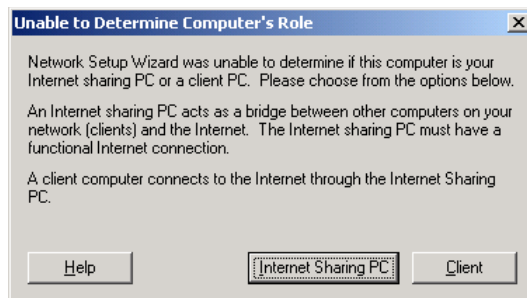


If this configuration is correct, click **Yes**. If it is incorrect, click **No** and the Incorrect Network Configuration window is displayed.



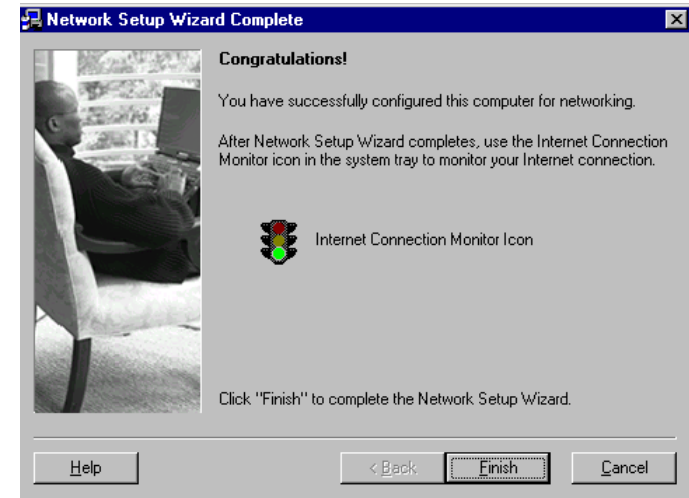
Follow the instructions on the screen, when finished, click **Next**.

The Network Snapshot window will be displayed again. If this configuration is correct, click **Yes**. If not, click **No** and the Unable to Determine Computer's Role screen will appear.



Select **Client** if this window is displayed.

If you click **Yes** in the Network Snapshot window, the Network Setup Wizard Complete window is displayed.



Click **Finish**.

After you complete this process for each computer, your network will be ready for use.

## Adding Appliances

You can use an Internet appliance, such as the iPAQ Home Internet Appliance, on your home network. After the Internet-sharing PC is up and running correctly, connect the appliance to the network using the appropriate media (see appliance documentation to determine appropriate media). Test the connection by going to the Internet.

## Adding PCs or Changing Adapter Settings

1. On the Internet-sharing PC, right-click the ICM icon in the system tray and select Network Setup Wizard from the pop-up menu.
2. Follow the screens as described in the network setup wizard server installation. To designate another PC as the Internet-sharing PC, you must uninstall and re-install this software.

# Configuring Internet Access

---

After you configure the Internet-sharing PC and the other computers on the network, each computer will be able to access the Internet via the shared connection.

*Note:* The version of WinGate included in the iPAQ Networking software provides a user license for simultaneous Internet access for up to six computers at any one time. You may have more computers on your network, but only six can access the Internet at the same time. To upgrade your WinGate to add more users or features, visit the WinGate website at [www.wingate.com](http://www.wingate.com).

## Internet Sharing with a Broadband Connection

If your Internet-sharing PC has a high-speed connection to the Internet that is always available, you may access the Internet from any computer on the network simply by opening a web browser or an email application on that computer. Examples of broadband connections include cable modem, DSL, and ISDN.

To share a broadband connection, the Internet-sharing PC must have at least two network interface cards installed: one network adapter to communicate with the network, and a second card, typically an Ethernet card, to communicate with the broadband service provider.

Your Internet-sharing PC supports up to three network interface cards on your network, not including the interface card that connects to the Internet. These cards can include Ethernet, wireless, or Phonenumber.

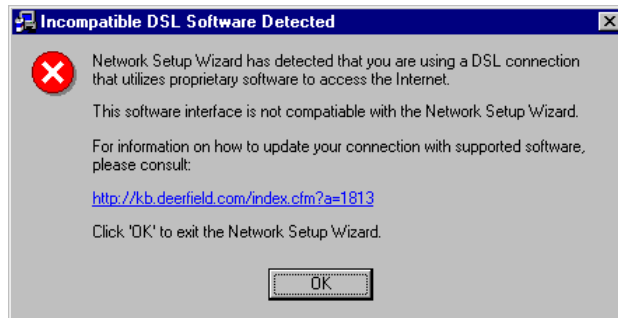
You must configure the network card that communicates with the broadband service as instructed by your internet service provider. The Network Setup Wizard automatically configures the Internet-sharing PC's network card and other home network adapter, if applicable, so no additional configuration is necessary.

For most broadband connections, the Internet Connection Monitor (ICM) remains green, indicating that you have an active Internet connection.

## Configuration for Some DSL Subscribers

**Note:** Some DSL providers use PPPoE (Point to Point Protocol over Ethernet) intermediate software to validate your Internet account.

The following message indicates that the software detected a non-supported PPPoE adapter for your DSL connection.



To resolve this issue, go to the website <http://kb.deerfield.com/index.cfm?a=1813>, where you can download updated software links and find information on how

to update your DSL connection to a supported PPPoE adapter. To make these updates, you will need your DSL user name and password.

If you are using a different PPPoE connection, or if you update your connection, perform the following steps:

1. Verify that you can connect to the Internet with your updated PPPoE adapter by launching your Internet browser. See the troubleshooting section if this does not work.
2. From the task bar, select **Start > Programs > Network setup wizard > Network setup wizard**.
3. Proceed as instructed by the wizard.
4. When you get to the Internet Connection screen, select the **Dial-up networking** option, then select your **DSL connection** as the dialer connection.
5. Proceed with installation as noted in the “Installation” section of this document.

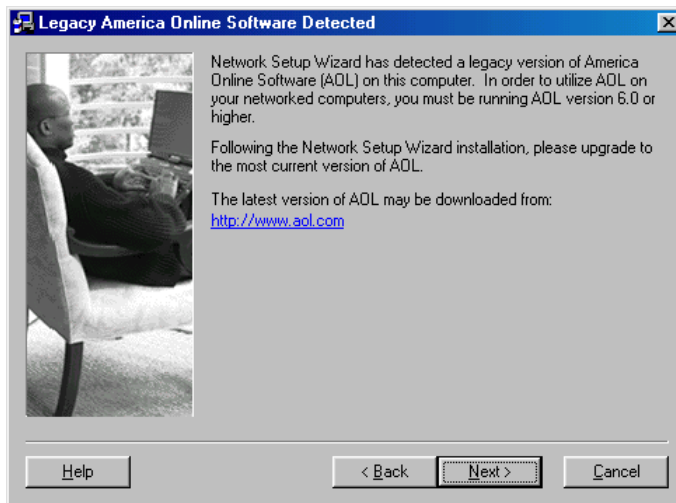
## Internet Sharing with a Dial-Up Connection

You can establish an Internet connection from any computer on the network by opening an Internet application, such as Microsoft Internet Explorer or Netscape. This should activate the dialer on the Internet-sharing PC if the dialer on that system is set to connect automatically. For instructions on how to configure your Internet-sharing PC for automatic dialing from your Internet applications, see page 11.

Alternately, you can use the ICM dialer. Right-click the ICM icon in the system tray and select **Connect** from the pop-up menu. The PC will be connected to the Internet without launching an Internet application.

## Configuration for AOL Subscribers

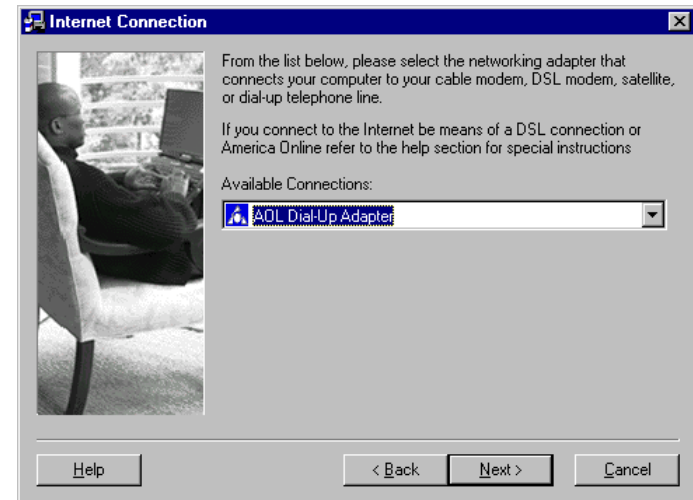
This software supports AOL versions 6.0b and later. If you receive the following error message, upgrade your AOL version to be compatible with this software:



Follow these steps:

1. Update your systems to AOL 6.0b or later.
2. When prompted by the AOL application, set your system to use the AOL adapter as your default internet connection.
3. From the task bar, select **Start > Programs > Network setup wizard > Network setup wizard**.

4. Proceed as instructed by the wizard.
5. When you get to the Internet Connection screen, select the **AOL Dial-Up Adapter** option.



6. Proceed with installation as noted in the **Installing the Software** section of this document.

# Additional Software Features

---

Your iPAQ Networking software uses many of the features found in the Wingate™ networking software from Deerfield.com. The following sections will explain many of these features. For additional information and help on Wingate features you can visit the Wingate knowledge base at the website <http://kb.deerfield.com>

## System Tray Icons

After the Network Setup Wizard completes the installation and configuration of the networking software, several program icons may automatically appear in the Windows system tray, which is located in the bottom right-hand corner of the Windows desktop.

- > The Internet Connection Monitor (ICM) icon is displayed in the system tray of all network computers.



- > The WinGate Home GateKeeper icon is displayed only in the Internet-Sharing PC's system tray.



## Bridging

Bridging is a feature that lets computers using different networking types communicate with each other as if they are on the same network. Examples of networking types include

Ethernet, Wireless, or Phonenumber. In order to use bridging, each type of networking adapter used on the network must be installed on the Internet Sharing PC.

For example, if your Internet Sharing PC has an Ethernet and Wireless networking adapter installed, it will enable a second computer connected only to the Internet Sharing computer via Ethernet to talk to a third computer only connected to the Internet Sharing PC via a Wireless adapter. Wireless clients can talk to Ethernet clients.

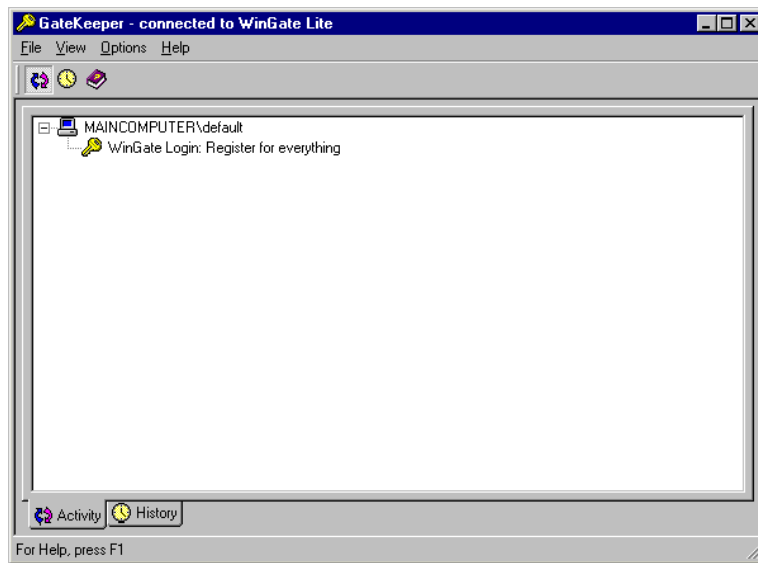
## Using WinGate Gatekeeper

GateKeeper is the user interface for WinGate. It runs on the Internet-sharing PC. GateKeeper records the Internet activity of all of the network computers that access the Internet using WinGate. GateKeeper does not keep historical information about the Internet activity of the Internet-sharing PC. GateKeeper runs only on the Internet-sharing PC.

To open GateKeeper, double-click the WinGate icon located in the Windows system tray on the Internet-sharing PC, or right-click the GateKeeper icon and select Start GateKeeper from the pop-up menu.

## Using the GateKeeper Activity Window

The GateKeeper Activity window displays the Internet activity of each computer that uses WinGate to access the Internet.



The WinGate Activity window displays the following information for each network computer connected to the Internet:

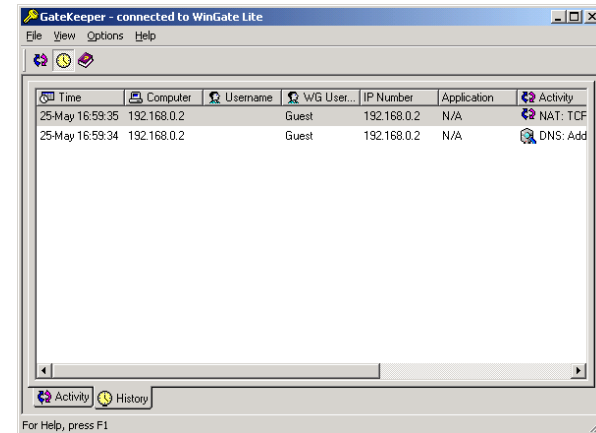
- > Computer name
- > User logon name
- > URL of the web site currently being accessed through WinGate

For more information about a computer, right-click the computer's entry and select **Properties** from the pop-up menu.

## Using the GateKeeper History Window

1. To view the list of recently accessed Web sites for each network computer click, the **History** icon the GateKeeper toolbar.

The History window is displayed.

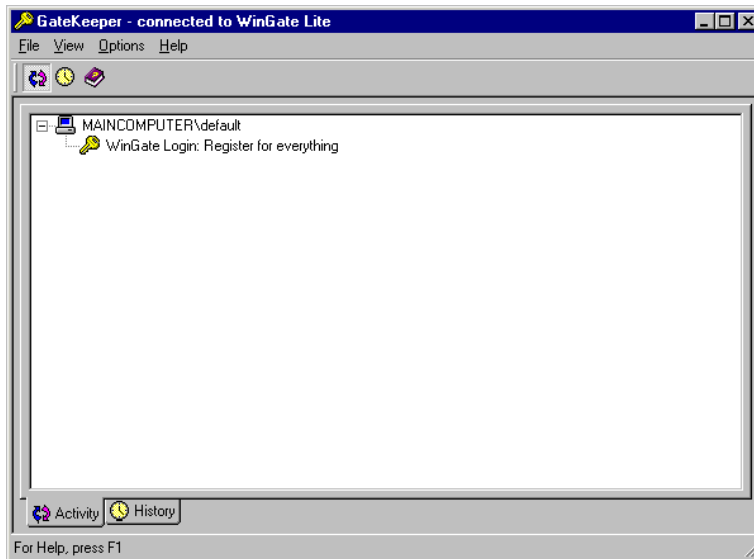


2. To sort the History log by a specific column, click the **heading** of that column.
3. To change a column's sort order from ascending to descending, click the **column heading** again.
4. To sort by web site, click the **Activity** column heading. This feature allows you to quickly scroll through the list to determine which web sites have been accessed by your network.
5. The **Bytes In** column (not shown) displays the name and size of recently downloaded files. To sort the History log by file size, click the **Bytes In** column heading.

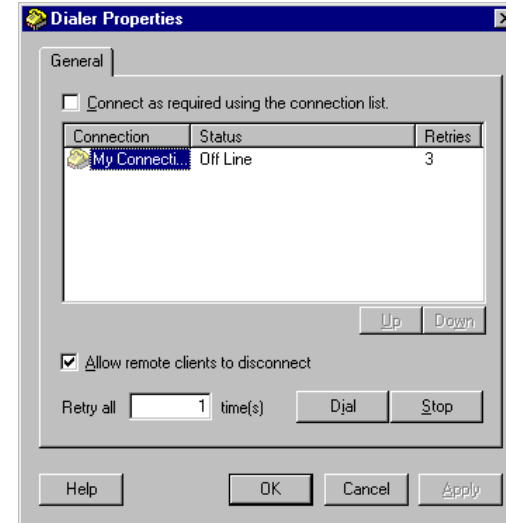
## Using the GateKeeper Dialer Options

If you are sharing an analog modem for Internet access, you can configure Wingate's dialer properties.

1. Double-click the WinGate GateKeeper icon in the Internet-sharing PC's system tray.  
The GateKeeper window is displayed.

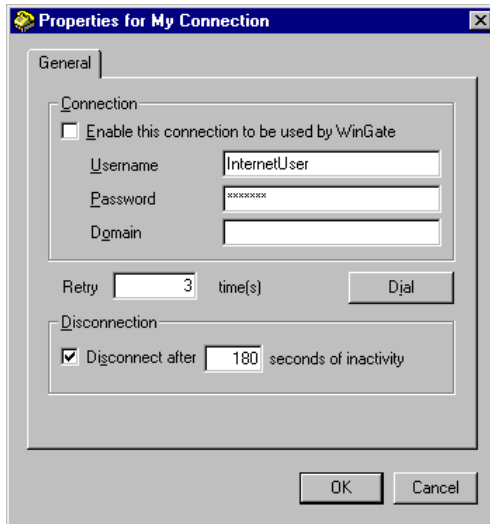


2. From the menu bar, select **View > Dialer**.  
The Dialer Properties window is displayed.



3. In the **Connection** column, double-click the dialer profile you want to modify.  
The Properties window for that dialer profile is displayed.





4. Verify that the **Enable this connection to be used by WinGate** checkbox is checked.
5. If you would like the computer to automatically supply your user name and password when you connect (so you don't have to type them each time) type your user name into the **User Name** field and type your password into the **Password** field.
6. You can specify the number of times the dialer will attempt to dial out when it is unable to make a connection in the **Retry** field.
7. To dial your Internet connection, click **Dial**.

8. You can specify whether an Internet connection should be terminated after a period of inactivity by clicking the **Disconnect after \_\_\_ seconds of inactivity** checkbox. If you choose to enable this option, you can type a different number into the seconds of inactivity box if you wish.
9. Click **OK**.

## Using the GateKeeper Stop/Start Options

You can stop the WinGate engine at any time to prevent the network computers from accessing the Internet via the Internet-sharing PC.

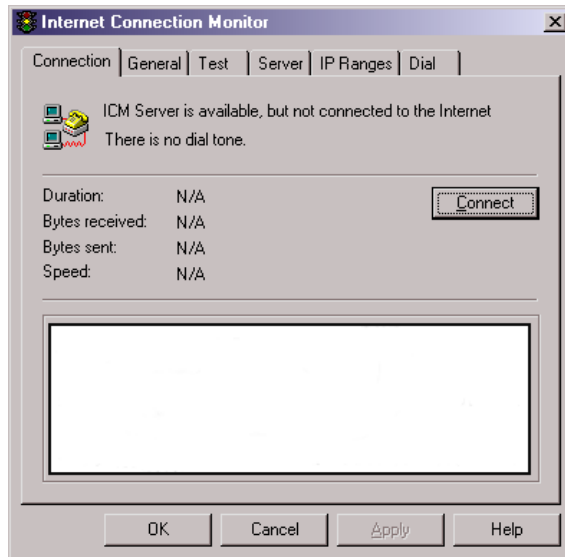
- Right-click the GateKeeper icon in the Internet-sharing PC's System Tray and select **Stop Engine** from the pop-up menu.  
The GateKeeper icon turns red to indicate that the engine has stopped.

You can restart the WinGate engine to restore Internet access whenever you like

- Right-click the GateKeeper icon and select **Start Engine** from the pop-up menu.  
The GateKeeper icon turns green to indicate that the engine has started.

# Internet Connection Monitor

The Internet Connection Monitor (ICM) allows PCs to access the shared Internet connection and monitor its current status. Double-click the ICM icon in the Windows System Tray to launch the ICM.



## Connecting to and Disconnecting from the Internet

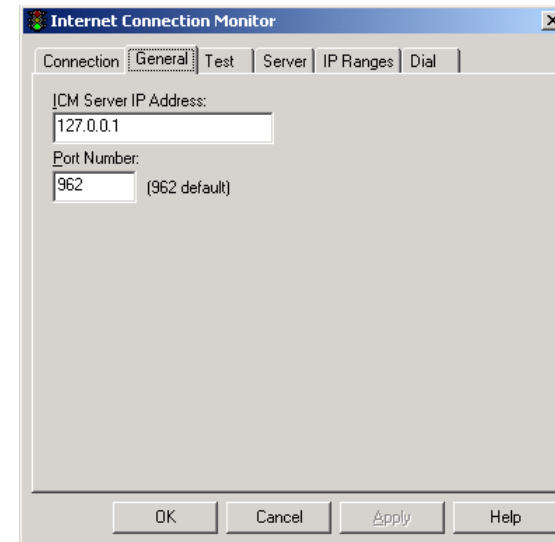
1. You can establish an Internet connection from any computer on the network by clicking **Connect** in the ICM status window.
2. To terminate the Internet connection, click **Disconnect** in the ICM status window.

## Configuring the ICM Server IP Address and Port

The Internet-sharing PC uses a default IP address of 192.168.0.1 and listens on port number 962. If the Internet-sharing PC uses multiple network cards to communicate with network computers, it will use multiple IP addresses.

*Note:* It is recommended that you do not change the ICM server IP address or port number unless advised to do so by a network specialist.

1. To change the IP address, type a new IP address into the **ICM Server IP Address** field on the **General** tab.



2. To change the port, type a new port number into the **Port Number** field.

**Note:** If you assign the server a different IP address or port number, you must also change the IP address or port number on the ICM General tab on each client computer. If you access this ICM option from the Internet-sharing PC, the server IP address is reported as 127.0.0.1 (as known as the “loop back address”), and not as 192.168.0.1 or another server IP address.

3. Click **OK**.

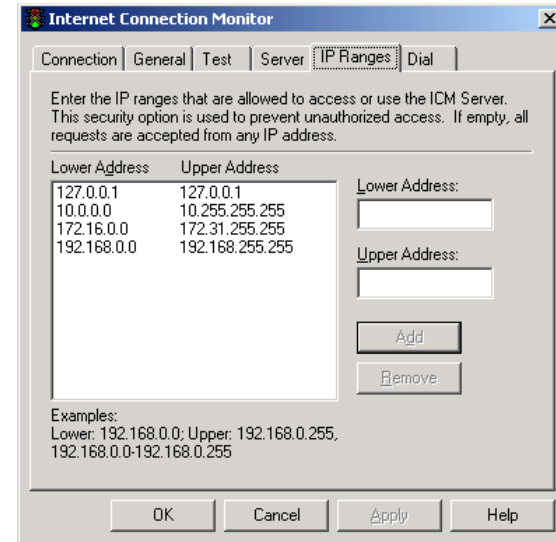
## Configuring IP Address Ranges

You can configure the range of IP addresses that may access and use the ICM server. This enables you to prevent unauthorized access to the ICM server. By default, the ICM server will accept packets from the following private IP address ranges:

- > The 10.0.0.0 network
- > The 192.168.0.0 network
- > The 172.16.0.0 to 172.31.255.255 address range
- > The loop back address, 127.0.0.1

To configure the IP Address Range, follow these steps:

1. Click the **IP Ranges** tab to add or remove authorized addresses.



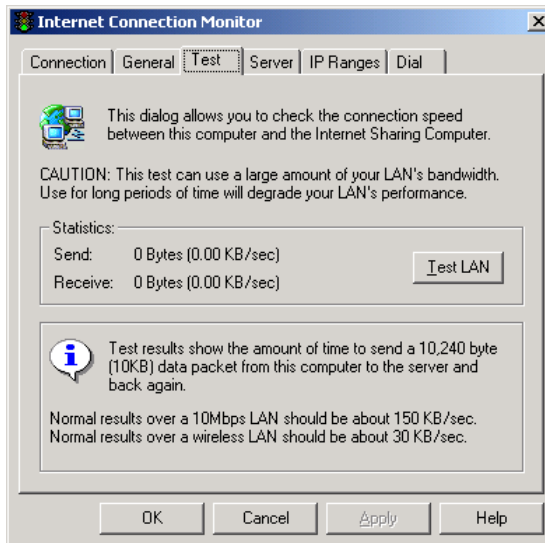
2. To add an IP address range, type the upper and lower boundaries of the range into the **Lower Address** and **Upper Address** fields.
3. Click **Add**.
4. To remove an IP address range, highlight the range in the IP address ranges list and click **Remove**.

**Note:** If you remove all entries from the list, the ICM server accepts requests from any IP address.

5. Click **OK**.

## Testing Network Connections

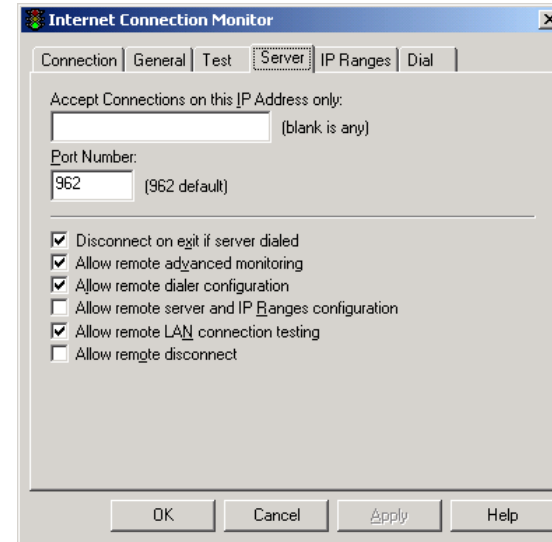
You can check the speed of the network connection between a client computer and the Internet-sharing PC.



1. Select the **Test** tab.
2. Click **Test LAN**.  
The results are displayed under Statistics on the Test tab.

## Configuring Connections to the ICM Server

1. Click the **Server** tab to configure the properties of the ICM Server.



2. To specify the IP address that the Internet sharing-PC will use to accept connections from other computers on the network, type an IP address into the **Accept Connections on this IP Address only** field.

**Note:** This field is left blank by default, so that the Internet-sharing PC will accept connections on whatever IP addresses it has been assigned.

3. To change port on which the Internet-sharing PC listens for connections, type a different port number into the **Port Number** field.

**Note:** If you change this port, you must change the port setting under the General tab to match this value on each of the Internet-sharing PC's client computers. The default port number is 962. It is recommended that you do not change the port number unless advised to do so by a network specialist.

4. Click **OK**.

Refer to the table below for information on other ICM options:

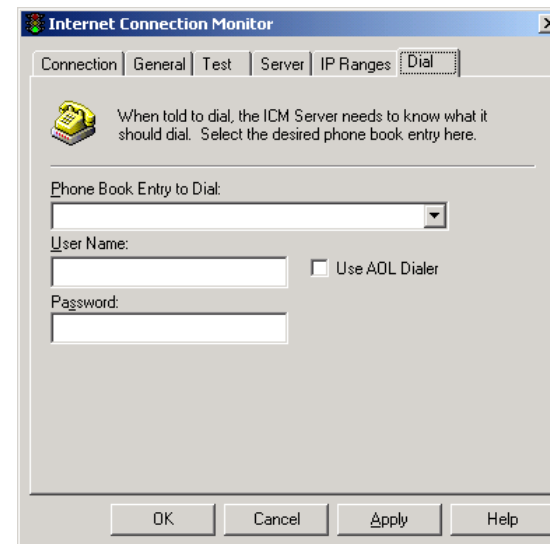
<i>ICM</i>	<i>When Enabled</i>	<i>Default</i>
Disconnect on exit if server dials	If the Internet-sharing PC dials out to the ISP, it disconnects from the Internet if the ICM Server or WinGate engine is stopped.	Enabled
Allow remote advanced monitoring	Client computers can switch to the ICM advanced view. Other remote management options are available when this option is enabled.	Disabled
Allow remote dialer configuration	A client computer can configure the dialer on the Internet-sharing PC.	Disabled
Allow remote server and IP ranges configuration	A client computer can configure the ICM server options and the IP ranges from which the Internet-sharing PC accepts connections.	Disabled
Allow remote LAN connection testing	A client computer can initiate the LAN connection test.	Disabled
Allow remote disconnect	A client computer can disconnect the Internet-sharing PC from the Internet.	Disabled

## Selecting a Dial-Up Networking Profile

You can select a dial-up networking profile.

1. On the **Dial** tab, select the desired profile from the **Phone Book Entry to Dial** drop-down list.

**Note:** The Dial tab is only available for users who are sharing an analog modem.



2. If you would like the computer to automatically supply your user name and password when you connect (so you don't have to type them each time) type your user name into the **User Name** field and type your password into the **Password** field.

3. Click **OK**.

## Stopping the ICM Server

You can stop the ICM Server by right-clicking the ICM icon in the Windows System Tray and choosing the **Stop Server** option from the pop-up menu.

Once you stop the server, the ICM reports that the server is not available, and network computers are not able to access the Internet via the Internet-sharing PC.

## Reconnecting to the ICM Server

If a client computer loses communication with the Internet-sharing PC, the ICM icon in the client computer's system tray turns red. This message is displayed if one of the following has occurred:

- > The Internet-Sharing PC has been turned off
- > The ICM server has been stopped
- > The client computer is out of range of the Internet-sharing PC

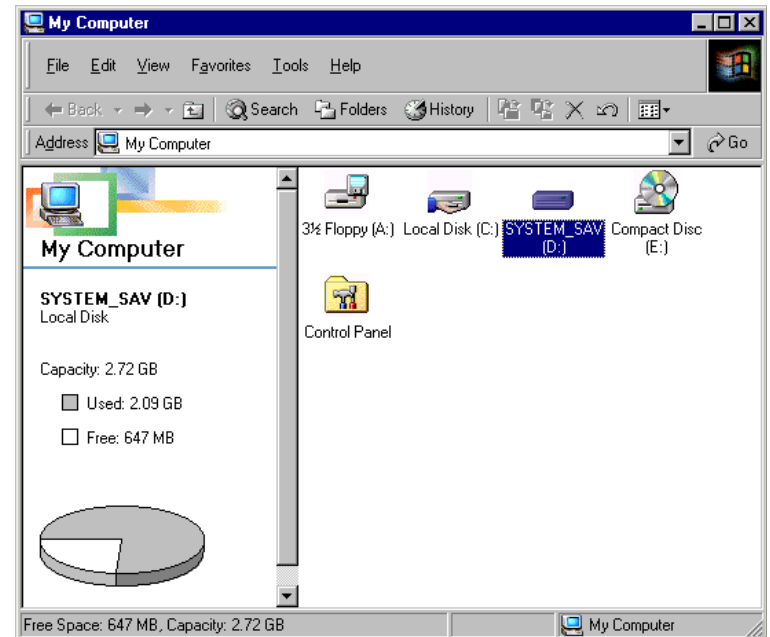
Follow these steps:

1. Confirm that the Internet-sharing PC is operational and that the ICM server is started.
2. Click **Retry**.
3. If the Internet-sharing PC is unavailable, click **Dial**.  
The client computer will dial out to the Internet using its analog modem, if one is installed. Once the client computer can communicate with the Internet-sharing PC again, the ICM icon should turn green.

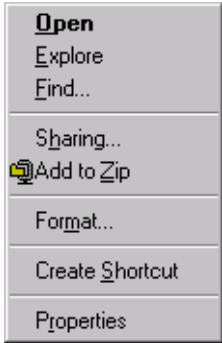
## Setting Up File Sharing

You can change drive and folder sharing settings whenever you like.

1. Double-click the **My Computer** icon on your desktop. The My Computer window is displayed.

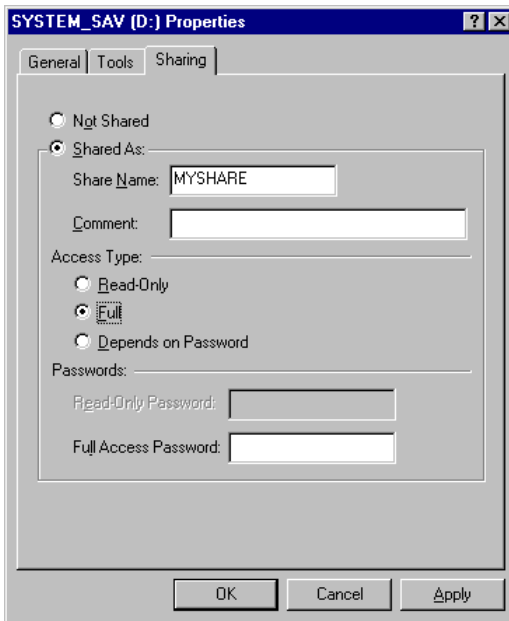


2. Right-click the **drive or folder** you want to set up for sharing (or on which you want to cancel sharing). This can be any folder or drive on your PC: a floppy drive, hard drive, CD drive, zip drive, etc. A pop-up menu is displayed.



3. Select **Sharing**.

The Sharing tab of the Properties window is displayed.



4. Click the **Shared As** radio button if you want to share the selected item or **Not Shared** if you don't want to share it. If you are setting the item up to be shared:

- Type a name for the drive or folder into the **Share Name** field. You can also enter a **Comment** if desired.
- Select the appropriate **Access Type**.

*Read-Only* access allows other users to view the files on the selected drive or folder.

*Full* allows other users to create, change, or delete files on the selected drive or folder.

*Depends on Password* allows other users to have Read-Only or Full Access to the selected drive or folder, depending on the password that you decide to give them.

**Note:** If you use your PC to access the Internet, it is highly recommended that you create passwords for all shared access.

- Type in a **Read-Only Password** if you selected **Read-Only** as the Access Type.
- Type in a **Full Access Password** if you selected **Full** as the Access Type.
- Type in both types of passwords if you selected **Depends on Password** as the Access Type.

5. Click **OK**.

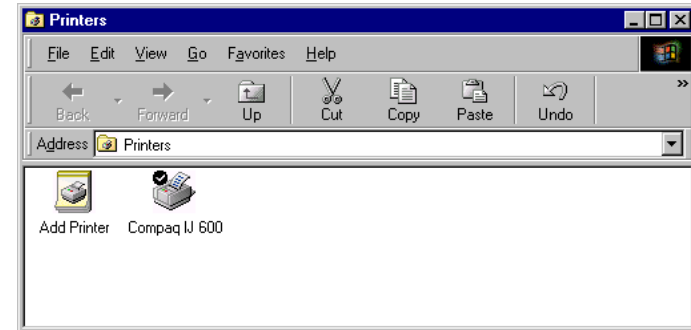
# Setting Up Printer Sharing

You can change printer sharing settings whenever you like.

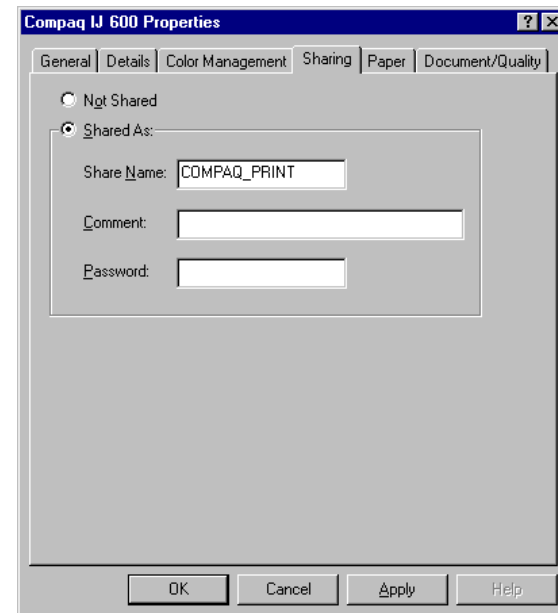
1. From the task bar, select **Start > Settings > Control Panel**. The Control Panel window is displayed.



2. Double-click the **Printers** icon. The Printers window is displayed.



3. Right-click the **printer** you want to share and select **Sharing** from the pop-up menu. The Sharing tab of the Properties window is displayed.





4. Click the **Shared As** radio button. If the button is black, the printer is shared. If the button is clear, the printer is not shared. Clicking the radio button toggles it back and forth between black and clear, or shared and not shared.
5. If you are setting the printer up to be shared, type a name for it into the **Share Name** field. (If you are canceling sharing, no action is necessary in this field; proceed to step 7.)
6. If you want to assign a password to the printer so that only certain users can access it, type a password in the **Password** field.
7. Click **OK**.

**Note:** Note: Some printers cannot be shared on a network. Others may require special instructions. Refer to your printer's user guide or contact your printer manufacturer if you think this may be the case with your printer.

*For questions regarding this product*, contact:  
Compaq Computer Corporation  
P. O. Box 692000, Mail Stop 530113  
Houston, Texas 77269-2000  
Or, call 1-800-652-6672 (1-800-OK COMPAQ)

*For questions regarding this FCC declaration*, contact:  
Compaq Computer Corporation  
P. O. Box 692000, Mail Stop 510101  
Houston, Texas 77269-2000  
Or, call (281) 514-3333

*To identify this product*, refer to the part, series, or model number found on the product.