

# iWavit Sony User Manual

**IMPORTANT NOTE:** This app requires the Apple-certified “iWavit Basic” or “iWavit Premium” hardware accessory, or the **Bluetooth®** Smart “iWavit Blast!” product. *It will not work without them!* See <http://www.thinkoptics.com> for details. If you have any support questions please contact [support@thinkoptics.com](mailto:support@thinkoptics.com). To buy iWavit hardware tap here: <http://thinkoptics.com/products-page/>



## THE ULTIMATE REMOTE

Congratulations on your iWavit purchase and welcome to the “iWavit Sony” app. This app turns your iPhone, iPod touch, and iPad into the ultimate RF&IR Remote for controlling your Sony LCD TV. There is no other Remote Control like it in the world.

## OVERVIEW

1. Set-up
2. Features
3. IR Extender
4. iWavit Family
5. Other Settings
6. Links



The "iWavit Sony" app turns your iPhone (and iPod touch, iPad) into a virtual metaphor for a real IR remote for controlling new Sony LCD TVs and is ideal for anyone who has a TV, home theater system, and Cable/Sat box and wants a simple yet powerful way to control all their multimedia viewing from the comfort of the couch. Specifically, this remote emulates the remote model RM-YD038 for the TV Bravia XBR52HX909. It will also control similar Sony TVs.

Also, with numerous other iWavit apps available, you will soon be finding yourself controlling ALL your A/V equipment and computers at home with the amazing iWavit hardware. The iWavit is not just a Universal Remote Control, it is the Ultimate Remote Control.

### ***What is iWavit Hardware?***

iWavit™ products add new hardware capabilities to Apple's platform of iPod, iPhone and iPad devices. The iWavit currently comes in three flavors.

1. iWavit *Basic*
2. iWavit *Premium*
3. iWavit *Blast!*



**Picture of iWavit Premium**

*iWavit Basic* consists of the iWavit Attachment which plugs into the iPhone/iPad. It will allow you to turn your iDevice into a Universal IR learning remote. *iWavit Premium* consist of the iWavit Attachment

and the additional *iWavit USB dongle & Lightbar*. The USB dongle enables plug & play control of any Computer that the USB dongle is plugged into. This control includes the patented Direct-Pointing mouse cursor control. Moreover, the USB dongle is also a wireless IR extender which can increase the range of IR control to over 300 feet and allow for multi-room control.

To be specific, the *iWavit Premium* includes:

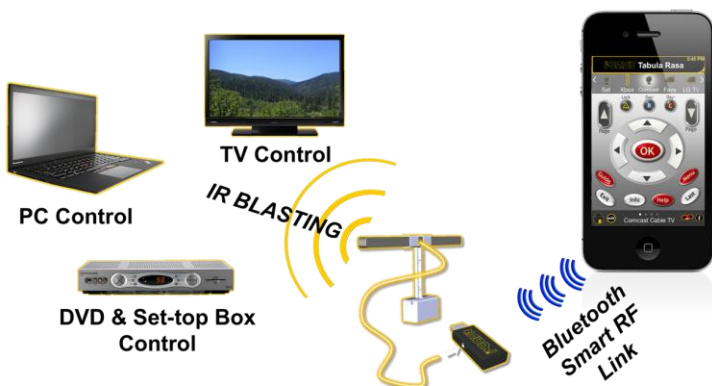
- An IR emitter for sending IR signals and controlling TVs and DVD,
- An IR detector for learning IR codes from real IR remotes,
- A patented optical motion-sensing module, which allows for precise and absolute tracking of the iPhone's position and orientation in 3D space, making it ideal for use as a Direct-Pointing 3D air mouse for PCs and Macs.
- A wireless PC microphone for controlling a PC or Mac via voice commands, or simple for making VOIP calls on your PC. (This is separate from the iPhone's microphone)
- Wireless 2.4GHz Plug & Play USB dongle for controlling PC/Mac/Linux machines. Simply plug it in, and you are ready to go. It is like plugging in a wireless HID keyboard and mouse. No software installation is required on the PC!

Both the *iWavit Basic* and *iWavit Premium* are Apple-certified products that are part of the Made-For-iPhone program.



Picture of the iWavit Blast! product

The *iWavit Blast!* product is a new addition to the iWavit family. It is a **Bluetooth®** Smart USB Dongle. The *iWavit Blast!* is most similar to the iWavit Premium in that it is a powerful Remote IR Blaster and give you direct RF wireless control of almost any PC/Mac/Linux or PS3 system. However, unlike the *iWavit Premium*, the *iWavit Blast!* does NOT require any iWavit Attachment to be plugged into the iDevice. It communicates directly with the Bluetooth 4.0 radios that are in the latest generation iPhone 4S, iPhone 5, iPhone 5S, iPhone 5C, iPad (3<sup>rd</sup> and 4 gen.), iPod touch (5<sup>th</sup> gen) and iPad mini. Moreover, we have expanded the functionality a bit and will be adding new hardware options via the 2.5mm jack. The first of these new modules is the Temperature Probe that can turn your iPhone into a wireless food thermometer.

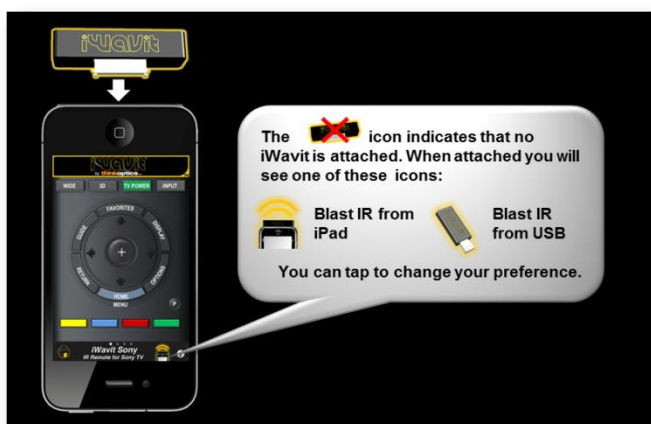


So what does the *iWavit Blast!* NOT do? It is not compatible with older generation iDevices that do not have a Bluetooth 4.0 RF radio. Also, it does not have IR learning built in, and does not have a wireless microphone. Finally, while it can act as a wireless TrackPad and PC keyboard (with the appropriate *iWavit* apps), it does not offer the direct-pointing 3D mouse features of the *iWavit Premium*. So in summary, get the *iWavit* product that best suits your needs, or if you are in doubt get all three. To top it all off, there are currently 38 *iWavit* apps that you can use with the *iWavit* hardware.

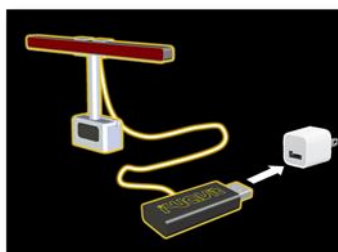
## SET-UP

Setup is very easy and takes only seconds. . Simply insert the *iWavit Attachment* into the iPhone/iPod touch/iPad and you will hear a "gun-cocking" sound indicating that the *iWavit* has paired successfully with the iPhone. You will also see the little red "X" disappear from the iPhone icon in the lower right of the screen.

That's it! You are now ready to control your Sony app by blasting IR signals from the *iWavit Attachment* on your phone. For more details, you can view the online [Quick-Start Guide](#).



If you have the *iWavit Blast!* or the *iWavit Premium* USB dongles, then plug the USB dongle into ANY powered USB port. This could be the USB port on your Set-box, your TV, a PC or a separate USB charger.



The USB dongle just needs power. Now complete the following setup steps:

**Tap the iWavit icon in the lower right corner of the main screen to select which iWavit to control.** You can control up to 16 different iWavit Premium USB dongles within RF range of 300 ft, and an unlimited number of iWavit Blast! dongles.



Tap the iWavit device that you wish to control and the window should disappear and the red X on the main screen should be replaced by an iWavit icon.

Each iWavit device has a unique ID number programmed into it from the ThinkOptics factory. If you have multiple iWavit USB dongles, however, you may wish to give each dongle a user-friendly descriptive name like "Living-room" or "Bedroom". This name is stored in the iWavit app. To scan for any and all iWavit dongles available within RF range of your iPhone, press the "Blast Selector" icon on the main screen and then tap the "Refresh" button. Press the arrow disclosure button and rename each of your iWavit devices.



## Renaming your iWavit USB dongles

**Troubleshooting:** If you do not see any iWavit Blast icons on Blast Selector screen, then make sure that your iWavit *Blast!* is powered on (i.e. connected to a USB dongle with power), and press the “Refresh” button to re-scan for iWavit USB dongles. If that does not work, then exit the iWavit app and go to the iPhone Settings app and make sure that the Bluetooth radio is turned on. Also, you can reset all your radios by momentarily placing your Phone in “Airplane Mode”, for about 5 seconds. If you still do not see the iWavit *Blast!* then please make sure your iPhone/iPad/iPod Touch model does support **Bluetooth® 4.0 Smart RF**.

## FEATURES

[\(TOP\)](#)

This app is a "Virtual Remote". The layout of the buttons is similar to the remote that ships with your Sony TV. Swipe left-right between 4 screens to get to other buttons.



## iWavit Virtual Remotes

There are a few notable benefits of iWavit Virtual Remotes over traditional remotes:

### **1. Virtual Remotes reduce living room clutter**

You can have a large diverse collection of Remotes and input devices (IR remotes, wireless keyboard and mouse etc.) in one easy to find location - your iPhone/iPad.

### **2. Never lose your remote**

No more rummaging through seats and pillows to find your remotes! Every one of them can now be inside your iPhone or iPad. In fact, each family member can have their own set of remotes on their iDevices.

### **3. The buttons are large and easy to hit**

By creating multiple screens for each remote, you can have large buttons without requiring an oversized remote control. Moreover, with the iPhone's backlit screen, there is no need to turn on the lights to adjust the volume or change the channel.

### **4. Long range**

You can use the (optional) iWavit USB Dongle & IR Lightbar (which are part of the iWavit Premium) as an RF-IR Extender with a range of over 300ft. This also means you don't need to point at the device you want to control.

### **5. You can customize**

You can create your own personal remote with just the few buttons you need (see Tabula Rasa app). You can consolidate buttons from your collection of old remotes. You can create *Activity* buttons (i.e. "macros") where a single button performs multiple actions.

This "iWavit Sony" app will let your iPhone act like a regular remote control. When you press the buttons on the app, IR signals will be emitted from the front of the iWavit.

All buttons on this remote are also re-programmable (provided you have the iWavit Attachment). This means that you can teach each button to control a different device if you want to. You might, for example, prefer to have the volume buttons control your surround sound system instead of the Sony volume.



To re-program buttons you hold down the "P"-button while at the same time tapping the button you wish to learn. An IR Learning screen will pop-up and you can now learn the IR code from your old remote and effectively



"move" it into

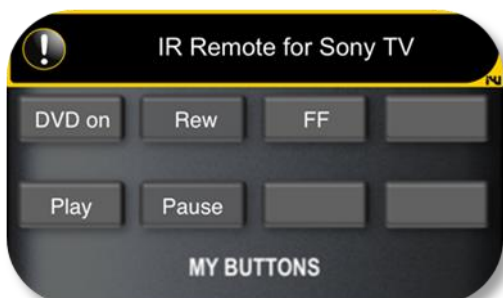
this Virtual Remote. When prompted to learn an IR button, you should point your old remote at the iWavit about 0.5m away, and tap the button on your remote briefly. Do not hold the button down for a long time. See a [video on IR learning here](#).

Furthermore, this remote has 8 extra fully customizable buttons on Screen 2 which are in a group called

"My Buttons".

You can re-label and re-program these

buttons. For example, you



may want these buttons to control other devices, such as your TV, your surround sound, DVD, Blue-ray player, or your radio. To re-label these buttons, simply press the "edit" button in the lower left and then tap the button you wish to change and start typing on the keyboard. Press "done" when finished and the keyboard will disappear.

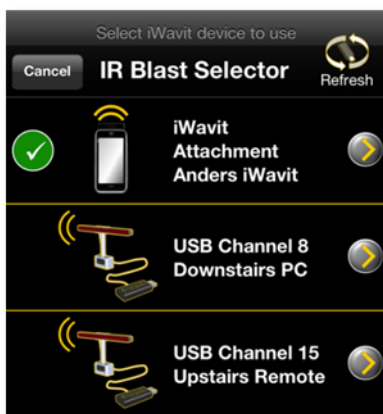
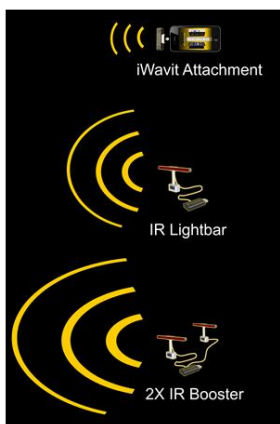
## RF/IR EXTENDER

[\(TOP\)](#)

When you control IR devices with your iPhone, the IR signals will by default be emitted from the front of the iPhone out of the *iWavit Attachment*, just like on a regular remote control. However, on the iWavit Sony app you can also choose to have IR signals blasted from the IR Lightbar (for the iWavit Premium and iWavit Blast! products) instead of the iPhone.

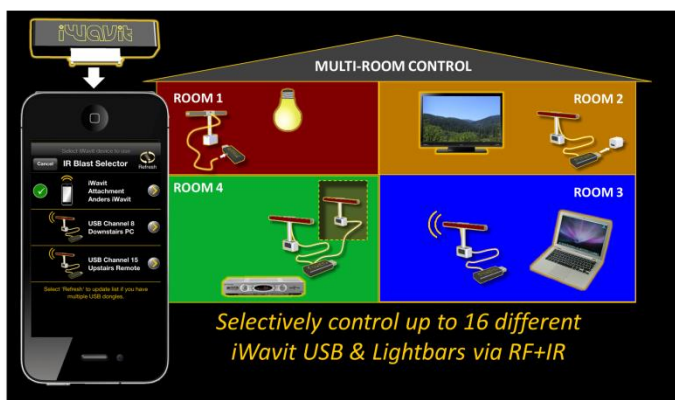
You do this by tapping the icon in the lower right corner and making a selection, as described earlier.

The IR Lightbar is a very powerful IR blaster with 6 LEDs. This means that the TV you want to control does not even have to be in direct line of sight to the IR Lightbar because the Lightbar will light up the room with invisible IR signals when it blasts. So now you will be able to control your TV by simply leaning back in your couch and pressing any button without even pointing the remote. In fact you can walk around your house and be up to 100 meters (300 ft) away and still control devices that are in optical range of the IR Lightbar. (Note: Walls and cabinets will reduce the range).



Furthermore, if you want *still more IR power*, you can purchase extra IR Lightbars and combine them with a 2.5mm splitter into the same USB dongle. See this link for more on the [IR Extender options](#).

So to summarize, this app gives you direct control of your Sony box, just like a regular remote. If you have the iWavit Premium or iWavit Blast models, you also get RF-to-IR control, and you don't have to point your Remote at the TV to control it. If you have multiple iWavit USB dongles & Lightbars you can get *multi-room* control. You can, for example, wirelessly control the upstairs lights as well as devices inside of cabinets. You control it all from your iPhone, from almost anywhere in your home.



*Note: To control lights you will need an IR wall dimmer.*

## OTHER SETTINGS AND BUTTONS

[\(TOP\)](#)

This app includes a 3D water ripple effect. You can enable/disable this by going to the iPhone Settings



app (tap icon) and selecting iWavitSony. In here you can also set other preferences. For example, if you wish the remote to always stay on and never turn off the screen while the app is running, then you can select that option here. You can also disable Ads or the helpful iWavit hints from appearing if you find them annoying.



Pressing the HOME button in the lower left of the front screen will take you to the app called [iWavit Flow](#) (Tap to download) if it is installed. This app provides a convenient cover-flow way to navigate between all your iWavit apps, or to browse for new ones on the App Store.



## THE iWAVIT APPS

[\(TOP\)](#)

The "iWavit Sony" app is part of a growing family of iWavit Virtual Remotes for Major-Brand electronic devices. For those who wish to create their own



**Click image to see full selection**

custom Remote Controls, we have created the Ultimate Remote Control app called "[Tabula Rasa](#)" and "[Tabula Rasa HD](#)" for the iPad. With these apps you can create remotes, download remotes, upload remotes to share them, send them to friends, use a remote control Wizard, search our IR database or learn IR codes directly from your old

IR remotes. You can even create macros for embedding multiple functions inside a single button to create "Activity" buttons like "Watch TV".

You can also use Tabula Rasa to control computers using the virtual USB Keyboard or through the patented Direct-Pointing air-mouse technology built into the iWavit. The iWavit hardware also includes a wireless microphone if you want to talk to your PC.

Another noteworthy app is "[iWavit TV Aid](#)" (Tap link to download). This is a 2-in-1 TV Guide and Remote control in one. This works with any TV and Service Provider in the US and will show you your TV channel listings. Just tap the TV show you want to watch and your TV will automatically change to the correct channel.

*There is a lot of hardware packed into the small iWavit. Use iWavit apps to unlock the full potential!*

## USEFUL iWAVIT LINKS

[\(TOP\)](#)



[iWavit News](#)



[iWavit Reviews](#)



[iWavit Forum](#)



[Email Support](#)



[iWavit Manual](#)



[iWavit Overview](#)



[iWavit Videos](#)

**BUY  
NOW!**